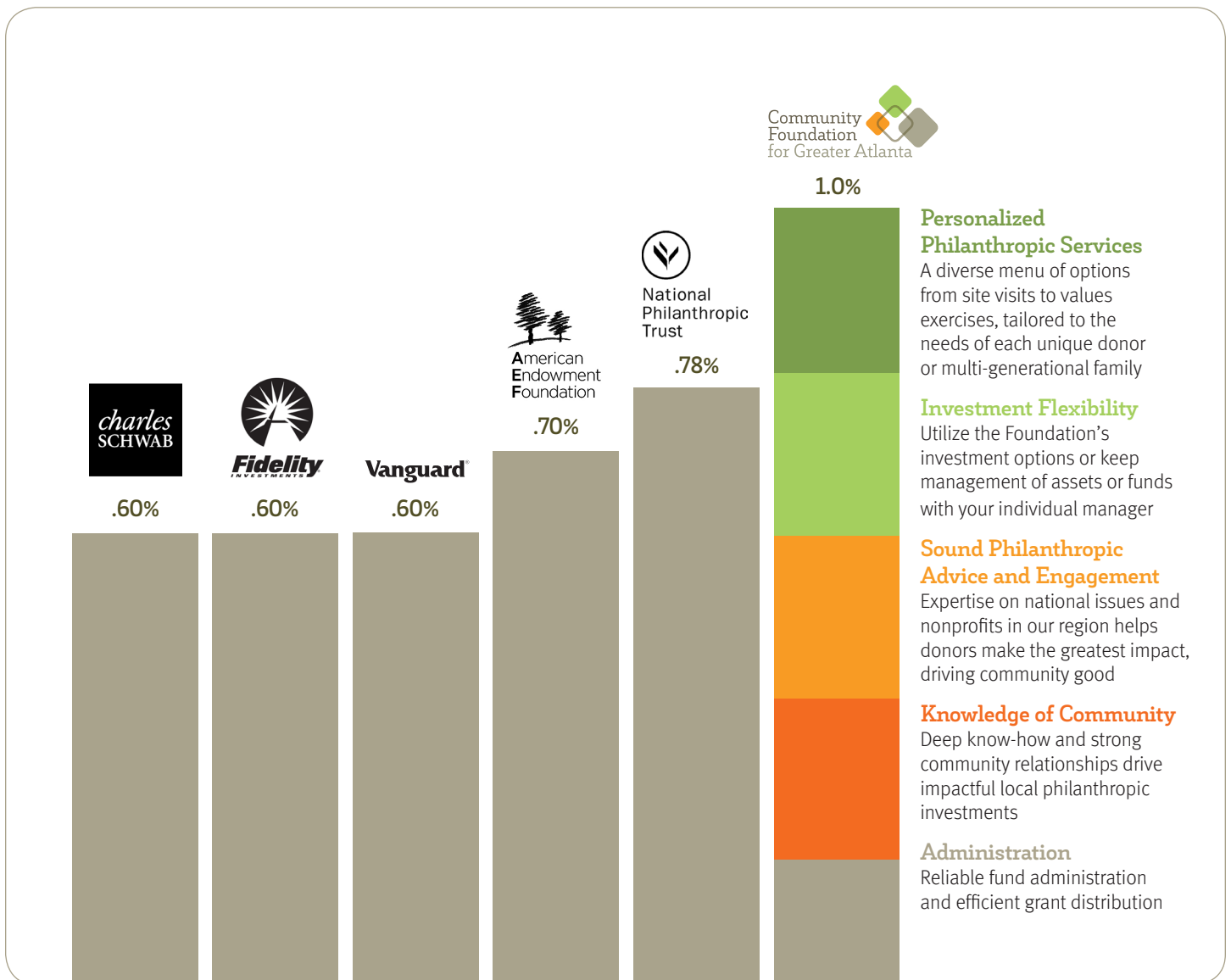


# Value for Price Comparison

At the Community Foundation for Greater Atlanta, our personalized philanthropic services go beyond fund administration. You get concierge-level services tailored to your specific needs with investment flexibility, freeing you up to make an impact on the causes closest to your heart, locally or nationally. It's multi-dimensional value designed to help you make the most of your philanthropy.



\*Administrative fees based on an average fund balance of \$500,000; verified with AEF, Charles Schwab, Fidelity, NPT and Vanguard as of June 2017.

To learn more contact Christy Eckoff, managing director, philanthropic counsel at [ceckoff@cfgreateratlanta.org](mailto:ceckoff@cfgreateratlanta.org) or call 404.588.3183.

