

VITAL

MATCH

FUNDING OPPORTUNITY CATALOG FOR OUR DONORS

Community
Foundation
for Greater Atlanta





DIRECTORY



PRINT



EMAIL

Throughout this document, helpful buttons give you the ability to return to this directory page, print or make a match via email.

Directory

3 [INTRODUCTION](#)

4 [MEET VITAL MATCH](#)

- What **Vital Match** is and how you play a vital role
- How were organizations selected?
- Make a match

The Needs

6 [CHILDCARE](#)

Closer Look Ministries, Inc.
Quality Care for Children
Sheltering Arms

8 [EDUCATION](#)

The Boyce L. Ansley School
Boys and Girls Clubs of North Georgia
Carrie Steele Pitts Home
re:imagine/ATL

10 [EMERGENCY FUNDS FOR INDIVIDUALS AND FAMILIES](#)

Buckhead Christian Ministry
C4 Atlanta, Inc.
Georgia Asylum and Immigration Network (GAIN)
Just Bakery of Atlanta
Los Niños Primero, Inc.
The Place of Forsyth County, Inc.
Positive Growth, Inc.
Street Grace
Tapestri, Inc.

13 [FOOD SECURITY](#)

The Atlanta Masjid of Al-Islam
ATLFAMILYMEAL, Inc.
Foundation of Wesley Woods
Georgia Organics
Global Growers Network
Meals by Grace

16 [HEALTH](#)

Bobby Dodd Institute
Clarkston Community Health Center
Good Samaritan Health and Wellness
Grady Memorial Hospital
NAMI Georgia
Piedmont Healthcare
Visiting Nurse Health System

19 [HOUSING](#)

Atlanta Legal Aid Society
CaringWorks
Covenant House Georgia
Focused Community Strategies (FCS)
Salvation Army of Gainesville

21 [SMALL BUSINESS SUPPORT](#)

Access to Capital for Entrepreneurs (ACE)
Atlanta Wealth Building Initiative (AWBI)
Herman J. Russell Center for Innovation and Entrepreneurship
Georgia Hispanic Chamber of Commerce
Start:ME

23 [ABOUT THE COMMUNITY FOUNDATION FOR GREATER ATLANTA](#)



Vital Match: Meet your Match

COVID-19 continues to hit our community hard. In the midst of the pandemic, the needs in our region have never been greater. We are thankful for the generosity of donors like you who have stepped up to help frontline nonprofit organizations deliver desperately needed food and housing, healthcare and childcare, education and emergency funds. Nonprofits have been able to pivot quickly, providing essential services to those with the greatest need.

However, the need continues. Unlike natural disasters where relief efforts quickly turn to recovery and rebuilding, the COVID-19 pandemic continues to devastate the lives and livelihoods of millions of our fellow residents. Schools are closed indefinitely, small businesses, including arts and cultural institutions, remain shuttered, and the number of individuals filing for unemployment continues to increase.

While we anticipated the needs of nonprofits would be great, the applications to our open call for grant support have been shocking. Over 650 organizations applied for tens of millions of dollars of funding, far greater than we are able to support through unrestricted dollars entrusted to us. That's where YOU come in.

Business as usual is not going to get the job done. This is an all-hands-on-deck moment that will test the character of our community. The resources from foundations and corporations will not be enough to meet the need – we must count on the commitment of individual contributors, and we need you.

In response to this great need, we're introducing **Vital Match**. **Vital Match** provides you, our donors, with a docket of vetted grant requests from qualified organizations. Like our Extra Wish book, **Vital Match** gives you the power to make funding recommendations for specific needs that may align with your personal philanthropic passions.

So please make a match today. You continue to make a real difference in the lives of our fellow residents, and together we can improve lives and the future of our region.



What is Vital Match?


Vital Match is a responsive program to help our donors make an impact in our community, which is reeling because of the COVID-19 pandemic. As you can imagine, we have enough nonprofit requests to fill several books like this. We will monitor the changing COVID-19 situation and publish **Vital Match** booklets while they are needed.

Vital Match focuses on organizations helping the most vulnerable in our community, including:

- Front-line workers
- Geographically underserved populations
- Immigrants and refugees
- Marginalized populations
- People experiencing homelessness
- School-age children and youth
- Seniors
- Young children

The Community Foundation recognizes that organizations of all types have been hard-hit by the COVID-19 pandemic. Click [here](#) to view a complete list of grant recipients from our COVID-19 Response and Recovery Fund. In addition, we have pivoted many of our other programs, such as the Metropolitan Atlanta Arts Fund, to provide COVID relief funds. To learn more, visit cfgreateratlanta.org or contact your philanthropic officer.

How to make a match:

To make a **Vital Match** grant, click the  button next to the organization you would like to help. It will generate an email to vitalmatch@cfgreateratlanta.org. Include your fund name and amount, and we'll take care of the rest. You may also reach out to your philanthropic officer for assistance.



How were organizations selected for Vital Match?

A pattern of seven areas of pressing community and resident needs has emerged that includes:

- ◆ Childcare
- ◆ Education
- ◆ Emergency Funds
- ◆ Food
- ◆ Health
- ◆ Housing
- ◆ Small Business Support

These are the priority areas for the Greater Atlanta COVID-19 Response and Recovery Fund, created in partnership with United Way of Greater Atlanta. All of the organizations included in this book have submitted information or applied to the COVID-19 Fund and been vetted by program staff. The dollar amounts listed represent their current gap in funding due to COVID-19. During application review, priority area experts vetted and nominated organizations doing critical work for inclusion in **Vital Match**. We whittled the list down to the organizations you see here, with an aim for diversity of mission, budget size, geography and people served.



To make a Vital Match, click on the + icon beside the nonprofit name. Include your fund name and amount - we'll do the rest!



Make a Vital Match: Childcare

Most childcare facilities are small businesses and they are facing the same problems as other small businesses during the COVID-19 pandemic. As they close their doors due to state restrictions, they face financial challenges from a lack of income. All of this creates a vicious cycle - fewer childcare facilities create fewer options for front-line health care professionals and first responders that deserve safe and healthy childcare for their children.

Childcare centers need support to remain financially viable so that they can re-open and be ready to immediately serve children as families return to work.

+ **Closer Look Ministries**

Need: \$210,000

Closer Look Ministries serves the southern part of the region (Butts, Clayton, Fayette and Henry counties) and equips children academically for success in life's challenges. Regularly serving 500 children, Closer Look provides subsidized childcare for essential workers, ongoing learning packets for families supporting learning at home and meal access to those in need including senior food delivery. It also provides rent and utility support. closerlookacademy.com

+ **Quality Care for Children**

Need: \$250,000

Quality Care for Children serves more than 100,000 children annually through the direct support of childcare providers. Without assistance during the COVID-19 crisis, many providers will close their doors, never to reopen. Quality Care is focused on connecting essential workers and childcare providers to fill vacancies created by the crisis, connecting open providers with those who are closed to facilitate the exchange of vital supplies and providing centers with essential information and training. It is also directly serving low-income families with young children through a food program, assembling packages of food and other supplies. qualitycareforchildren.org



+ **Sheltering Arms**

Need: \$150,000

Sheltering Arms transforms the lives of children, their families and communities through model early childhood education and leadership in the field. Sheltering Arms connects parents with supportive services, referrals, resources and networks to ensure they excel as both parents and community members. This request will support the cost of essential goods distributed to families on a weekly basis including diapers, wipes, formula, feminine hygiene products, household goods and food items, and support for the family coaches and program staff who are in direct contact with families providing guidance and assessing critical needs.

shelteringarmsforkids.com



To make a Vital Match, click on the + icon beside the nonprofit name. Include your fund name and amount - we'll do the rest!



Education

School closings have shifted education from classrooms to virtual and distance learning, requiring access to laptops, tablets or other mobile devices, online connectivity and technical assistance to engage in online education. Over 344,000 students in our region do not have access to the technology support needed¹. In half of our school districts, 42% of students do not have devices and some districts are as high as 93%. Different age groups are facing different challenges:

- ◆ K-12 students that are detached face a five to six-month learning loss and an unknown impact on their ability to matriculate to the next grade. Students with special needs don't have in-home support and all students are experiencing an overall decrease in supportive services through schools and nonprofit providers.
- ◆ Graduating seniors and high school juniors in Title 1 schools are without critical resources to help them prepare for their respective transitions (61.8% of our region's schools are Title 1 schools).
- ◆ College students are also challenged with access to distance learning, questions on how to matriculate into the next school year and loss of campus jobs, compounded by housing and food insecurity.

The Boyce L. Ansley School Need: \$27,000

This tuition-free, private school for children of families who have experienced homelessness in Atlanta serves a population that is one of the most vulnerable to economic turmoil and disruption due to the COVID-19 pandemic. It is providing tablets pre-loaded with curriculum content, materials and books, emergency services and food, MARTA passes and regular check-ins by teachers and trained social workers to students and families. theansleyschool.org

¹ Source for all data points included in introduction: Georgia Department of Education



+ **Boys and Girls Clubs of North Georgia**

Need: \$73,000

A hub for families in Fannin, Gilmer and Pickens counties, the Boys and Girls Clubs of North Georgia is providing services to over 200 households, many of whom are low-income families with little to no internet access. The Clubs have provided electronic tablets, fitness equipment and daily virtual workouts and activities and meal classes. bgcng.org

+ **Carrie Steele Pitts Home**

Need: \$197,095

Carrie Steele Pitts Home serves youth ages 12 - 24 with a residential foster care program and specialized services for youth who grew up in foster care. In response to dorm closures because of COVID-19, it traveled to pick up students from colleges in Valdosta, Savannah and Gwinnett County and opened two residential cottages to house students with educational services, Wi-Fi, food and mental health services. csph.org

+ **re:imagine/ATL**

Need: \$86,500

With innovative programming, re:imagine/ATL gives youth inclusive and equitable education and career opportunities in the film and digital media industry. In the past month, it has focused on virtual workforce training, peer and professional mentorship, social-emotional supports, career counseling, and providing technology equipment, internet and emergency services to youth and their families. It has also trained educators in virtual learning.

reimagineatl.com

To make a Vital Match, click on the + icon beside the nonprofit name. Include your fund name and amount - we'll do the rest!



Emergency Funds for Individuals and Families

The immediate loss of income for thousands of individuals and families has depleted or eliminated any savings or financial reserves for emergency needs. Hourly, lower-income, those that work in the hospitality and service sectors or gig workers - many of whom have no access to sick pay and are living paycheck-to-paycheck - are feeling the economic impact of the virus the most. They experience difficulties paying rent and living expenses, compounding the economic impact. As more people across the metro area face lost income due to illness, layoffs and temporary closures, solutions to increase financial security become even more critical.

+ **Buckhead Christian Ministry**

Need: \$1,607,500

Buckhead Christian Ministry (BCM) provides basic needs such as clothing, financial assistance, food and hygiene kits as well as longer-term programs including debt remediation, financial education, savings matches and supportive housing. As a result of the COVID-19 crisis, BCM has moved all case management meetings and emergency financial assistance appointments to virtual platforms and has amended their program policies to provide financial assistance for clients for up to three months. buckheadchristianministry.org

+ **C4 Atlanta**

Need: \$16,000

C4 Atlanta provides professional development courses for artists looking to further their creative businesses. C4 Atlanta has migrated workshops online with a pay-what-you-can model and adapted other programming including its residency program. In the wake of COVID-19, the organization has pivoted and launched an emergency relief fund for artists who have lost their jobs. Many of these artists are freelance creatives, which limits assistance from other sources. To date, it has provided over 60 artists with immediate cash to pay for food, rent and medicine. This request will help to fund additional emergency support. c4atlanta.org



+ **Georgia Asylum and Immigration Network (GAIN)**

Need: \$15,000

GAIN provides free legal services for immigrants and asylum seekers in Georgia who are survivors of domestic violence, human trafficking, sexual assault and other crimes. GAIN is working to support the basic needs of its clientele (emergency financial assistance, food, etc.) in addition to the legal services it provides during the crisis. It is shifting its legal services to an online service model for this population of people who would otherwise receive no support from other sources during this time. georigaasylum.org

+ **Just Bakery of Atlanta**

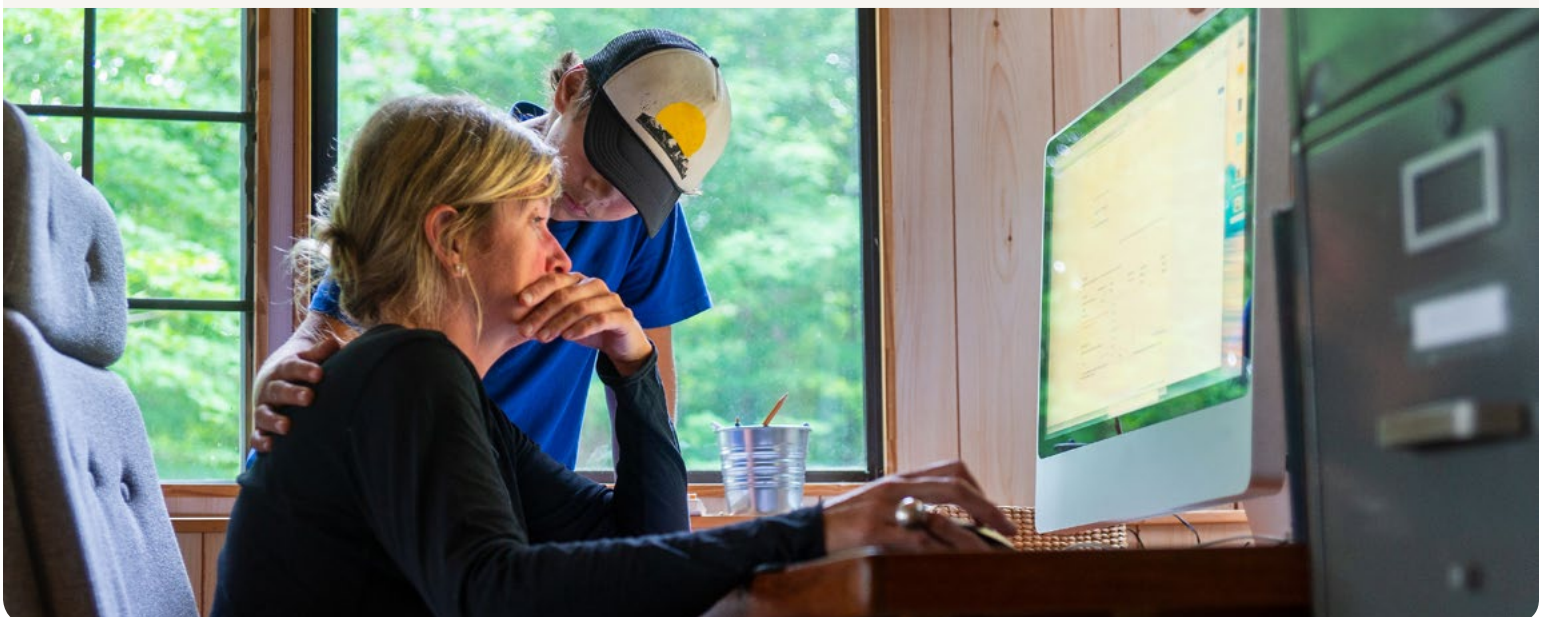
Need: \$60,000

Just Bakery is a nonprofit bakery training program for immigrants and refugees who cannot speak English and want to become contributing members of our region. With the inability to train due to COVID-19, the organization has shifted to providing livable wage assistance to sustain these employees during the shutdown of the bakery. The request will cover personnel costs for 90 days. justbakeryatl.org

+ **Los Niños Primero**

Need: \$1,394,000

Los Niños serves over 300 immigrant families with children living in poverty in the metro Atlanta area. During the COVID-19 pandemic, these families need emergency relief to help pay for rent, utilities and food. losninosprimerousa.org





+ **The Place of Forsyth County**

Need: \$38,906

The Place of Forsyth County's Emergency Assistance Program provides homeless individuals and others living in poverty with direct aid for medical expenses, rent, utilities and other basic needs. With many employers closing their doors or reducing services to slow the spread of the virus, the agency has witnessed a steep rise in the number of individuals seeking assistance. theplaceofforsyth.org

+ **Positive Growth**

Need: \$545,000

Positive Growth provides culturally competent, residential and community-based mental health services to improve the lives of children, youth, adults and families during difficult life transitions. The pandemic has increased demand for mental health and suicide prevention services in DeKalb, Fulton and Gwinnett Counties. positivegrowthinc.org

+ **Street Grace**

Need: \$85,000

Street Grace serves youth across metro Atlanta who have suffered from sexual exploitation. With a surge in request for help, Street Grace is aiding 75 child sex trafficking survivors with food, housing, medical care, mental health services and other life-sustaining assistance. streetgrace.org

+ **Tapestri**

Need: \$55,000

Tapestri provides emergency shelter and services for victims of domestic and sexual abuse in the metro Atlanta region. Additional funding is needed for a substantial uptick in emergency rent assistance, food, transportation and counseling needs. tapestri.org

To make a Vital Match, click on the + icon beside the nonprofit name. Include your fund name and amount - we'll do the rest!



Food Security

Shelter-in-place requirements have disrupted the system of food access for hundreds of thousands of individuals and families: eliminating school food programs for children and their families; limiting access to food by seniors and the homeless population; and reducing or eliminating wages for many low-income residents. While many coordinated responses have been implemented, some in our region are still not able to access healthy food options. Some reasons for the continued barriers include ID requirements, transportation or food that is not culturally appropriate.

Many traditional providers, such as food banks and senior meal delivery services are experiencing huge increases in demand - many reporting anywhere from a 50% to 300% increase. At the same time, these organizations are facing increased operation and food costs due to new sanitation procedures and decreased donations.

+ **The Atlanta Masjid of Al-Islam** Need: \$272,140

This project from the Atlanta Masjid of Al-Islam addresses the culturally-appropriate food security concerns of 500 seniors by providing frozen halal meals, fresh fruits and vegetables during the COVID-19 pandemic. It has a large population of senior citizens - most over 70 years old and many who are low-income and facing a lack of transportation. There is also a commitment to continue this service post-COVID-19. atlantamasjid.com

+ **ATLFAMILYMEAL** Need: \$6,712,000

This new organization was founded by a group of restaurant and hospitality industry professionals to repurpose existing resources and technology to nourish and support workers who have experienced severely reduced hours and job loss due to the pandemic. As an industry disproportionately staffed by people of color and Latino workers, this community is especially vulnerable. It anticipates creating a network of more than 100 restaurants within a month to serve 2,500 workers. This is an impressive example of innovation in the local economy to give back during a time of crisis. atlfamilymeal.org



+ **Foundation of Wesley Woods**

Need: \$427,143

Foundation of Wesley Woods has been providing affordable housing for older adults since 1954. During this crisis, it has continued ensuring that its high-risk residents stay safe and have secure food and housing. The requested funds will allow it to ensure food is safely provided and delivered for the 340 low-income senior residents of two South Atlanta HUD communities. wesleywoods.org

+ **Georgia Organics**

Need: \$480,000

Georgia Organics is the only statewide nonprofit that provides direct aid to small organic farmers. In response to COVID-19, it is maintaining the food chain in three interwoven areas - by expanding to provide meals to food service workers, seniors and other vulnerable populations, it is giving restaurants the chance to provide meals and keeping farmers financially independent. With this funding it will provide 50,000 meals to 600 families from 15 restaurants in 12 weeks. This will in turn provide farmers with 70% of the income they would have received under normal circumstances. georgiaorganics.org

+ **Global Growers Network**

Need: \$73,400

More than 300 families grow produce across the Global Growers Network of farm and garden sites in metro Atlanta for their families and for local marketplaces. Most of these growers are limited English speakers, live near or below the federal poverty level and are considered food insecure. The organization will convert unused food plots to become food-relief production gardens, with a focus on producing 15,000 pounds of fresh produce in the next three months for distribution to hundreds of local families. This response is unique in that it focuses on providing culturally-appropriate food to refugees. globalgrowers.org



+ **Meals by Grace**

Need: \$521,706

This organization serves Forsyth County, an underserved area with limited investment from the philanthropic community. Meals by Grace installed two new commercial freezers and refrigerators within days of the pandemic declaration to receive and store more protein and fresh produce from its food sharing partners. It has maximized the number of home deliveries and has set up curbside pickup at its food pantry while also reducing the number of volunteers involved. In the last two weeks of March, it provided 19,635 meals. Requested funding will help offset the increased output and strain on operations. mealsbygrace.org



To make a Vital Match, click on the + icon beside the nonprofit name. Include your fund name and amount - we'll do the rest!



Health

The health safety net has experienced significant reduction in services, as most school-based health clinics and some community-based health centers have closed. For those that are still open, loss of revenue due to a decrease in patient volume and costs associated with requirements for personal protection equipment, along with difficulties in acquiring equipment, are making it difficult to provide consistent, quality care. In response, many clinics are shifting to telehealth. All of this has resulted in reduced access to health care for under-and-uninsured individuals and rural populations.

The COVID-19 pandemic has created stress and trauma for many residents, and the disruption in healthcare delivery has also reduced access to mental health services by patients, and the mental health system is not able to provide care for the increased number of people experiencing increased levels of stress and trauma.

+ Bobby Dodd Institute
Need: \$71,410

The Bobby Dodd Institute's mission is to empower people with differing abilities to maximize their potential by securing economic self-sufficiency, independence and inclusion within their communities. It is addressing the prevention of isolationism amongst clients by implementing a loaner program of equipment to assist with connectivity. This request will support equipment and materials for telehealth and purchase tablets for participants, which include hot spots and wireless functionality. bobbydodd.org



+ Clarkston Community Health Center

Need: \$25,000

Located in Clarkston, Georgia, a community known for its incredible diversity and large refugee and immigrant populations, the Clarkston Community Health Center serves individuals who are uninsured or underinsured. Many patients have underlying health issues due to lack of preventative healthcare services or have come from countries with poor healthcare systems. The request will purchase needed supplies for the increase in demand for food, baby essentials, safety kits and protective equipment for staff. clarkstonhealth.org

+ Good Samaritan Health and Wellness

Need: \$47,500

Good Samaritan's mission is to provide the medically underserved in our community with compassionate and individualized health care and related services in an atmosphere of respect and dignity. Good Samaritan is one of the few medical offices in Pickens County testing for COVID-19 and the only one providing visits at a reduced rate based on income level with no additional cost for testing. goodsamhwc.org

+ Henry W. Grady Health System Foundation

Need: \$2,299,000

Since 1994, the Grady Health Foundation has raised critical dollars to benefit the Grady Health System. Grady handles more than 700,000 patient visits and treats 185,000 unique patients each year, more than any other single hospital in the metro region, and it is seeing increased need in the wake of the coronavirus pandemic. At this time, its most pressing priorities for patient care and staff safety include universal employee testing, employee testing at Crestview Nursing Home and enhanced in-house testing. gradyhealth.org

+ NAMI Georgia

Need: \$170,000

NAMI Georgia's mission is to empower affiliates to create communities where all affected by mental illnesses find hope, help and acceptance. NAMI provides mental health services for individuals and their families and is experiencing an increased demand for services due to COVID-19. This request is for the transition to the delivery of teleservices to maintain services to clients. namiga.org



+ **Piedmont Healthcare**

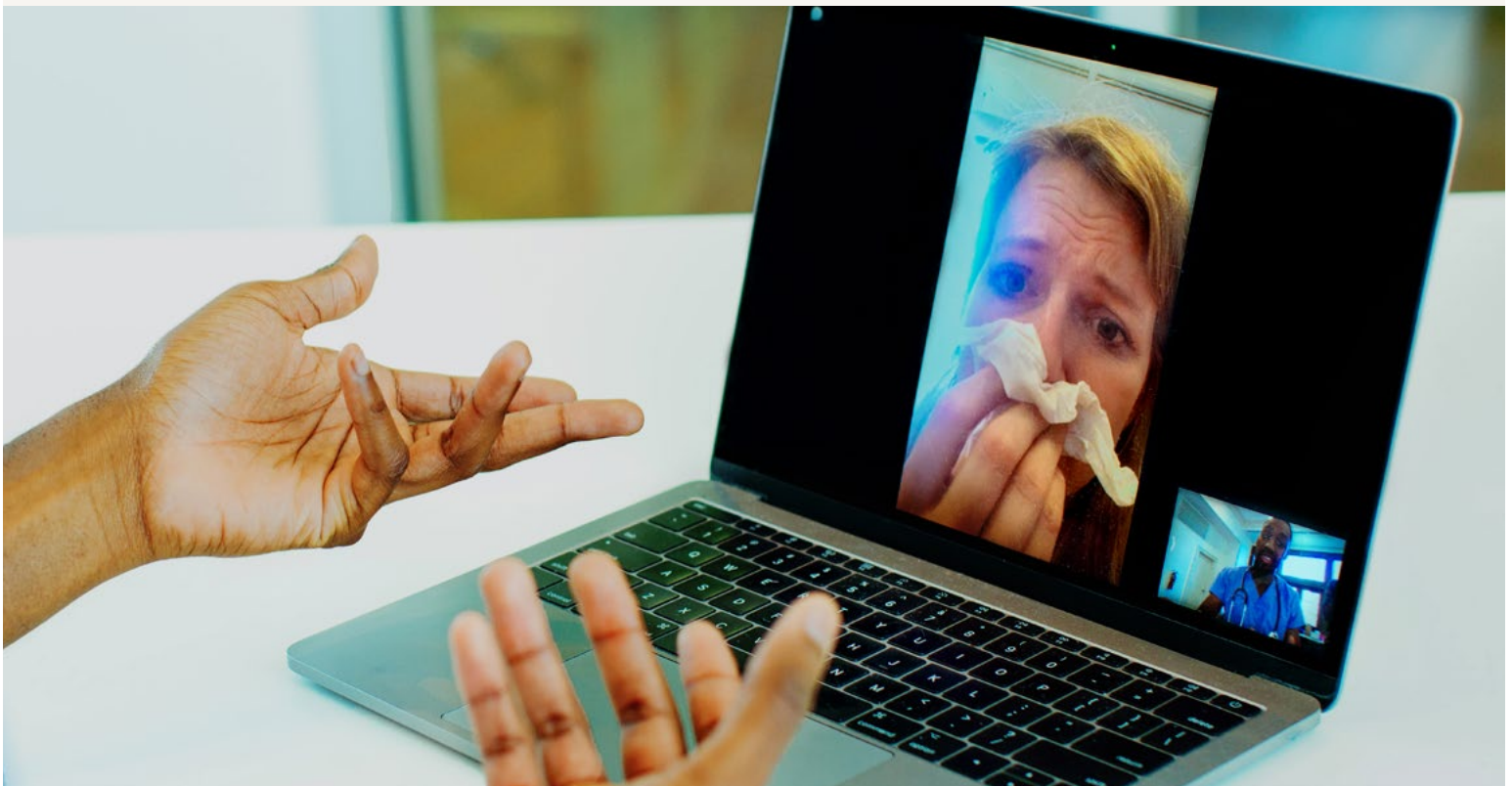
Need: \$15,671,585

For more than a century, Piedmont Healthcare has been a recognized leader in delivering expert care. Piedmont established The Piedmont Healthcare COVID-19 Infrastructure Fund to enhance and accelerate the work that is already being done to take care for everyone in our community. The request will help provide personal protective equipment to ensure the safety of staff and increase the capacity of hospital beds and ventilators across its system to keep the community healthy. piedmont.org

+ **Visiting Nurse Health System**

Need: \$250,000

Visiting Nurse Health System provides a full continuum of home healthcare, aging services and home hospice care to adult and pediatric patients. It is providing frontline home care to some of the most at-risk in our region during this crisis. This request will cover the costs of increased numbers of appointments including travel costs, personal protective equipment and treatment supplies for elderly residents of metro Atlanta. vnhs.org



To make a Vital Match, click on the + icon beside the nonprofit name. Include your fund name and amount - we'll do the rest!



Housing

The immediate loss of income for thousands of individuals and families has resulted in increased housing instability, increasing the demand for temporary and supportive housing and rent and utility payment assistance. An analysis from the National Multifamily Housing Council (NMHC) suggests that nearly one-third of U.S. renters were unable to pay their April rent. However, this analysis does not include subsidized housing stock or give a full representation of the 44 million American renter households affected.²

While the Coronavirus Aid, Relief and Economic Security Act (CARES Act) provides a range of temporary eviction protections to tenants who live in federally-assisted properties or multifamily properties with federally backed mortgages, millions of tenants who do not live in such properties are struggling to pay their rent.

+ **Atlanta Legal Aid Society**

Need: \$390,987

Since 1924, Atlanta Legal Aid Society has offered free civil legal aid for low-income people across metro Atlanta. The Atlanta Legal Aid Society is working to ensure that legal avenues are upheld and individuals are not taken advantage of, illegally evicted or experience predatory practices during this pandemic. The request will support continued advocacy on behalf of its clients in danger of losing housing due to COVID-19. atlantalegalaid.org

+ **CaringWorks**

Need: \$105,000

CaringWorks works to reduce homelessness and empower the marginalized by providing access to housing and services that foster dignity, self-sufficiency and well-being. Amid COVID-19 response, staff continues to support clients while adhering to extreme safety precautions. The request will help provide supportive housing to more than 1,000 individuals and families experiencing physical health conditions that increase their risks of contracting and succumbing to COVID-19. caringworksinc.org

² fortune.com



+ **Covenant House Georgia, Inc.**

Need: \$865,000

In response to the pandemic Covenant House quickly operationalized an emergency response plan which is evaluated against and evolves with criteria released by the CDC. As the virus continues to spread, the agency is working tirelessly to ensure it will have an adequate reserve of food, medical supplies and cleaning essentials. This request will support increased on-site programming due to the shelter-in-place order and social distancing guidelines. covenanthousega.org

+ **Focused Community Strategies (FCS)**

Need: \$609,900

FCS serves residents of Historic South Atlanta, a low-income, primarily African American community of just over 2,800 residents. Its response efforts for COVID-19 include micro-grants to residents for basic needs like utilities and food and housing assistance (FCS anticipates that 30% of tenants in its mixed-income housing program will be unable to make payments). The organization also operates the Carver Market, the community's only close source for affordable groceries, which offers 2-for-1 produce to customers using SNAP benefits. It is depleting available funds for this program at a much faster rate than normal due to increased need. fcsministries.org

+ **Salvation Army of Gainesville**

Need: \$15,000

In response to the coronavirus pandemic, the organization has evolved service delivery to ensure that immediate needs of its community are met - 27.2% of the Gainesville population lives below the poverty line. The Salvation Army of Gainesville will provide help with shelter costs for people experiencing homelessness, rental assistance and food assistance. salvationarmygeorgia.org/gainesville

To make a Vital Match, click on the + icon beside the nonprofit name. Include your fund name and amount - we'll do the rest!



Small Business Support

More than half of jobs are provided by small businesses and low-income residents are disproportionately affected by the widespread closure of small businesses. The average small business has 27 days of cash flow and for many restaurants, it's more like 16 days.³ For these businesses, shutting down operations for even a few days causes cash flow issues. Local small businesses with low profit margins, such as restaurants and retail, low operating reserves, low-wage hourly employees and little-to-no benefits are most at risk of major financial hardships that result in business closures and job losses. In addition, many small businesses are having difficulties applying for and accessing capital through Small Business Association's Paycheck Protection Program and EIDL programs.⁴

+ **Access to Capital for Entrepreneurs (ACE)**

Need: \$1,200,000

Established in 1999, ACE provides community economic development to underserved people and communities. Faced with the COVID-19 crisis, in early/mid-March, it quickly began a deep customer discovery effort to assess the impact. The coronavirus calamity, especially for underrepresented and underserved entrepreneurs, has mandated the need for up to three months deferment. Now it is implementing an emergency loan product. aceloans.org

+ **Atlanta Wealth Building Initiative (AWBI)**

Need: \$2,750,000

AWBI focuses on promoting understanding of community wealth building models for black-owned businesses and elevating the engagement, capacity and leadership necessary to shape a more inclusive economic narrative in Atlanta. Hearing the dire requests of black small business owners who are being disproportionately impacted by the COVID-19 crisis, AWBI is raising rapid-response funds and sustainability measures. The funds will be issued as grants and loans to cover lease assistance, payroll shortages, e-commerce conversion support, supporting the conversion of service businesses to online interactions and other needs. atlantawealthbuilding.org

3 thenewlocalism.com/newsletter 4 npr.org



+ **Herman J. Russell Center for Innovation and Entrepreneurship (RCIE)**

Need: \$110,000

The Herman J. Russell Center for Innovation and Entrepreneurship serves as an economic mobility engine for the African American community. Serving over 4,500 businesses in the Atlanta region, RCIE's network of entrepreneurs are 100% African American, 52% female and 40% based in southwest Atlanta. In response to COVID-19, it has developed programming and resources meant to increase access to capital, especially Small Business Administration funding, such as the Paycheck Protection Program which African American-owned businesses are less likely to qualify for when compared to white-owned businesses due to existing banking relationships, capital reserves and other forms of collateral. rcie.org

+ **Georgia Hispanic Chamber of Commerce**

Need: \$217,375

The Business Development Center at the Georgia Hispanic Chamber of Commerce serves immigrant business owners and young entrepreneurs with education and access to resources to help achieve success. This population is particularly impacted by the COVID-19 crisis - many are closing business operations, laying off employees and struggling to pay rent and utilities. The Center's response has been to disseminate crisis protection, compliance and resource information virtually and to provide technical assistance for loan applications, as well as direct cash grants to businesses. ghcc.org

+ **Start:ME**

Need: \$15,440

This free intensive business training program for promising micro and small businesses in Clarkston, East Lake, Kirkwood and South Atlanta provides entrepreneurs with the tools and connections necessary to build and grow successful businesses. It is raising a Resilience Fund to address the needs of ventures identified via ongoing impact surveys. Support includes emergency continuity grants, traditional business transition to online sales support, special learning and expert advisory sessions. startmeatl.org

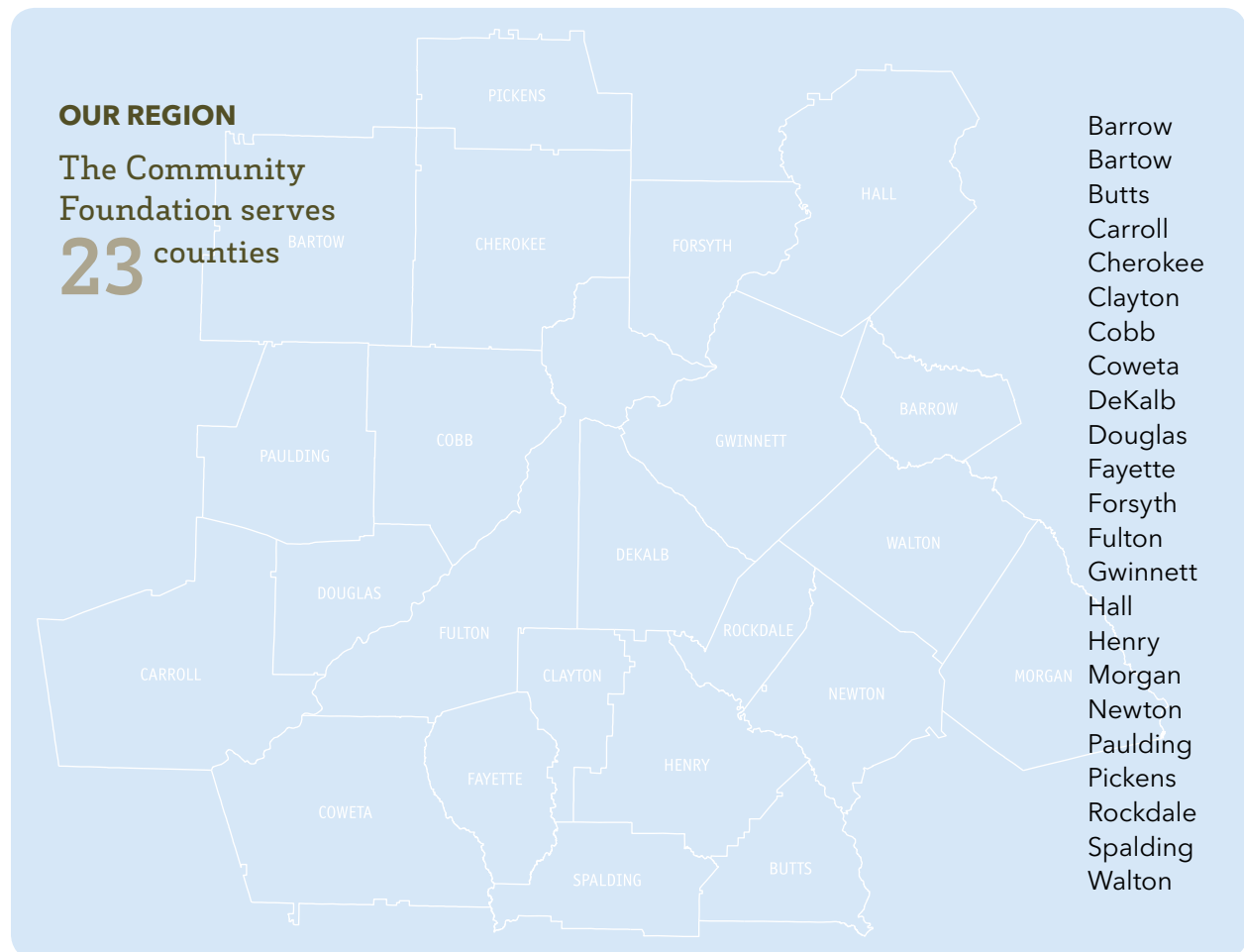


About us

The Community Foundation for Greater Atlanta is your trusted philanthropic partner. We connect generous donors and funders with our 23-county region's greatest needs and most innovative solutions.

For nearly 70 years, the Community Foundation has been a philanthropic first-responder to the most pressing needs facing our community, identifying issues well before they are commonly known, supporting research that deepens understanding of these issues and incubating and leading solutions with a vision for a better Atlanta. As Atlanta's home for philanthropy, we are committed to inspiring philanthropy in support of programs and policies that increase equity of opportunity for the most vulnerable communities in our region.

cfgreateratlanta.org





191 Peachtree Street NE, Suite 1000
Atlanta, GA 30303

