



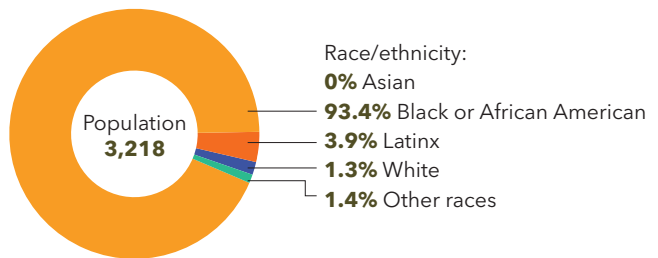
Thomasville Heights Investment & Impact Report

Why Thomasville Heights

Since 2016, the Community Foundation for Greater Atlanta has worked to close the opportunity gap in the Thomasville Heights community in southeast Atlanta. Begun by our Spark Opportunity Giving Circle and their collective grantmaking, this place-focused approach has been a catalyst for additional investments and our impact strategy now includes grantmaking, strategic partnerships, impact investing, and policy advocacy.

Thomasville Heights is a small and geographically isolated neighborhood of approximately 3,200 residents located in southeast Atlanta, adjacent to the Atlanta Federal Penitentiary and Starlight Drive-in Theatre on Moreland Avenue. This predominantly Black neighborhood has a rich history of civic leadership and strong social networks but also grapples

with dis-investment, severe poverty, poor health outcomes, low educational scores and deplorable living conditions for many residents. In 2020, the median household income was \$17,422.



The Community Foundation's commitment and strategy in Thomasville Heights is multifaceted.

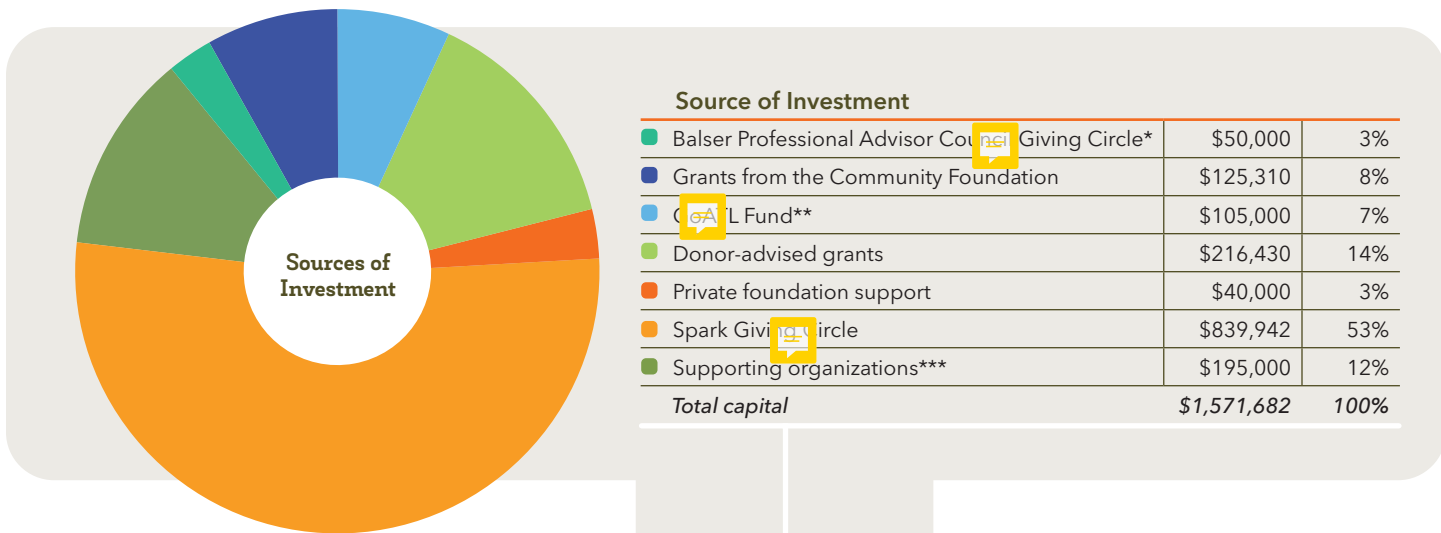
WE FOCUS ON THREE STRATEGIES:

- 1 Strengthen the anchor institution** that make significant impact on stabilizing the lives of children and families in community, but who have also made long-term commitments to stay in the Thomasville Heights community
- 2 Develop Neighborhood nonprofit capacity** because we know that small neighborhood-based nonprofits fill a unique niche when it comes to meeting community need and they have the ability to act nimbly and close to community
- 3 Support and build power of resident leaders** in Thomasville Heights because residents inherently have a deeper understanding of their community's assets and ills. With the right resources, they can drive their own vision for positive change within the neighborhood and meet real community needs



Investment in Thomasville Heights

From 2016-2020, the Community Foundation, in partnership with our donors, has invested at least **\$1,571,682** in Thomasville Heights, with all contributions going directly to community impact.



Community engagement/civics/building resident power	\$171,533	11%
Education	\$174,990	11%
Food	\$169,583	11%
Housing	\$625,883	40%
Jobs/workforce development	\$113,500	7%
Mental health support	\$136,005	9%
Youth development	\$180,188	11%
Total grantmaking	\$1,571,682	100%

*Balser Professional Advisor Council is a giving circle of financial advisors and tax attorneys who have an interest in philanthropy - both personally and professionally - and seek to give back to the community. **The innovative GoATL Fund accelerates and sustains social outcomes in our community through impact investing.

*** A supporting organization is a subsidiary of the Community Foundation that has its own board of directors, bylaws, charitable status, grant priorities and investment policies. Through this close connection, it receives all of the associated tax benefits with administrative support but maintains autonomy.

The impact in Thomasville Heights has been dramatic.

Since 2016:

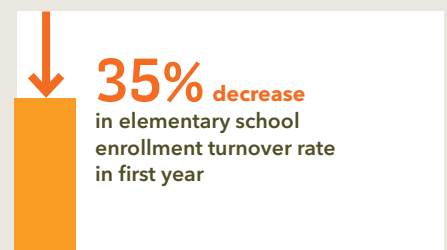


The **THRIVE Thomasville Council** is a unique resident-led advisory board that directs funding to community-led projects. Along with providing the community with opportunities to complete projects that best serve the community, the council also receives extensive leadership development training. THRIVE Thomasville increases visible community leadership resulting in sustainable, democratic structures for engagement that build on neighborhood strengths. This model enables creative, resident-driven strategies to develop and address neighborhood needs.



Partner Spotlight: Atlanta Volunteer Lawyers Foundation (AVLF)

In 2016, Atlanta Volunteer Lawyers Foundation (AVLF) launched Standing with Our Neighbors, supported by the Spark Opportunity Giving Circle. This program embeds a community advocate and an attorney at Thomasville Heights Elementary School for direct community support.



Data provided by our partners at Atlanta Volunteer Lawyers Foundation and Purpose Built Schools.

“

The donation from the Spark Opportunity Giving Circle was a TREMENDOUS help to our monthly food bank. We distributed to approximately 300 families monthly prior to COVID-19 and 400 families during COVID-19. The grant helped us to add a third food distribution especially for the seniors. We were able to provide a stipend for some in the Thomasville community to assist with the pick-up, loading and unloading of boxes and pallets of food. It's a massive operation.”

”

- Tonetta Collins,
Bible Way Ministries



The Greatest Need

The Community Foundation has traditionally made strategic investments that work to close the opportunity gap across a number of complex issues and systems in Thomasville Heights in Thomasville Heights through amplification of resident voice, community engagement, literacy, employment and more. However, given the current pandemic, we have shifted our focus to

address the short-term and immediate needs of the Thomasville Heights community. While staff continue to monitor strategic investment opportunities on the horizon, our funding priority is basic needs until the community achieves a certain level of recovery from the pandemic.

About the Community Foundation for Greater Atlanta

Since 1951, the Community Foundation for Greater Atlanta has been leading and inspiring philanthropy to increase the vitality of our region and the well-being of all residents. With 70 years serving the metro Atlanta region and a robust team of experts, the Community Foundation expands its philanthropic reach and impact by providing quality services to donors and bold, innovative community leadership.



Interested in learning more? Contact Kathleen Wagner, Senior Philanthropic Officer, kwagner@cfgreateratlanta.org or 678.244.9257.