



Making
ALL
STRONG

Annual Report 2019: Inspiring philanthropy in our region

Community
Foundation
for Greater Atlanta





COVER ART: Ernest Shaw's "Atlanta Strong" captures the spirit of our 23-county metro Atlanta region as it faces the future: confident, hopeful and forward thinking. It also importantly reflects an ATL where strength comes from equity. To read about the Community Foundation's ATLevate initiative, [see page 8](#).

STRONG AS YOU MAKE IT!

ATLANTA

What will it take to make the ATL strong? Or is the question, who?

"Philanthropy is commendable but it must not cause the philanthropist to overlook the circumstances of economic injustice which make philanthropy necessary." Martin Luther King Jr.'s words resonate as we grapple with how to use our philanthropic mandate to fight the economic and racial injustice laid bare by COVID-19. It's clear that Atlanta, and America, have a new destiny ahead. One that we want to be a part of.

This report highlights 2019, the stories of what we accomplished with our valued partners. Yet, as we stand here in these last days of June 2020, we must acknowledge the moment we are in. We affirm our awareness of the inequities and injustices brought by systemic racism in our communities. We recognize that COVID-19 has had a more serious impact on our Black and Brown neighbors. We must be accountable to these underserved communities.

To that end, as a Board and staff and via events we held with you, we have been on a multi-year journey to reveal and understand the deep inequity in our region. As the region's endowment, we crafted an equity of opportunity architecture to inform our daily work. In 2019 with our Board's support, we committed to a mission with equity for all at its core that will transform our practices and processes.

A catalyst for the Foundation's 2019-2021 strategic plan was the CEO transition taking place in 2020. In the last 43 years, we've worked together to create an indelible philanthropic mark. That legacy includes galvanizing responses to Atlanta's early HIV/AIDS crisis, securing Martin Luther King Jr.'s papers as a permanent fixture in Atlanta and helping nonprofits weather the storm during periods of economic turmoil.

That ability to act swiftly catalyzed in March when the reality of COVID-19 brought our region to a halt. We immediately brought together trusted partners, and with the United Way of Greater Atlanta opened the [Greater Atlanta COVID-19 Response and Recovery Fund](#). Private and family foundations, corporations and countless individuals like you have given over \$22 million to this Fund. Since inception, \$17.3 million has been granted to 320 nonprofits for financial assistance, food, healthcare, education, small business supports, housing and childcare. Our region continues to experience even deeper disparities along racial lines and we vow to be an active partner.

This we do know: We want EVERYONE in Atlanta to thrive. And it's up to all of us to make it stronger. How can you partner with us in this work? As you read and reflect, we hope you view the seasons of 2019 through the lens of today. We know the stakes are high. Time is short. The decisions we make now determine our tomorrow - and beyond.

With gratitude for your service to the region,



Alicia Philipp
Alicia Philipp
President & CEO



Susan Grant
Susan Grant
Board Chair

ATL: Strength grows where it is nurtured.



Philanthropy as a family value strengthens communities

The Rand Family

Bryan and Tiffany Rand were raised with the value that supporting their communities is a necessary part of life. Their families supported people and organizations they cared about, it was expected to give of your time and treasure. Now, with a growing family of their own, they hope to teach their children by example as they learned from their own parents and grandparents. They emphasize giving that provides educational and entrepreneurial opportunities to African Americans. "It goes without saying that education has been a pathway to prosperity for us and for so many other Black families," Bryan Rand said. Proud to be building their family in Atlanta, the Rands aim to use their access, perspective and resources to provide a different viewpoint and a bridge between communities that don't often intersect.

Rand also lends his time and financial acumen to the Foundation as a Board member, Investment Committee Chair and as an advisor to the GoATL Fund. "The Community Foundation serves as a critical nexus in Atlanta between talent, capital and philanthropy. It's essential that I use my seat at the table to provide a unique and helpful perspective." Donors like the Rands who go all-in make ATL stronger.

"In this time when conversations are being had about race that haven't been had previously, we want to leverage this moment to help create a more just and equitable society for everyone."

A shared love of beauty strengthens future art

Barney "Bim" Franklin and Hugh Burke

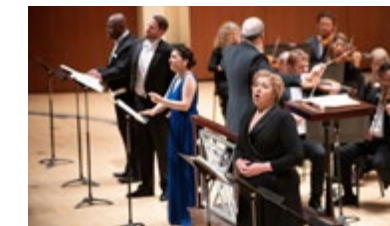
They met when Bim Franklin was reading a book in Piedmont Park under a tree. Hugh Burke stopped and struck up a conversation and they were together for the next 42 years. The couple shared the same interests - art, music, travel and time with good friends.

Franklin's big passion was the visual arts. He was an astute collector and he amassed a wonderful collection of art in the pair's New York and Atlanta apartments. Burke was also passionate about music and the sound of the human voice, which he called the "most beautiful instrument in the world."

As the couple planned for their legacy, friends say they wanted to give back to the region where they met, lived and worked, while also reflecting their personal passions. The couple sought to support three of Franklin's favorite musical organizations - the [Atlanta Symphony](#), the [Metropolitan Opera](#) and [Spivey Hall](#)

at Clayton State University. In partnership with their financial advisor, they entrusted funds to the Community Foundation as a part of [our EnTrustATL planned giving program](#), in the form of a designated fund. Franklin passed away in 2007, and when Burke followed him in 2018, his fantastic American abstractionist collection was donated to the High Museum of Art.

Franklin and Burke have helped to ensure that Atlanta's generations to come will enjoy and benefit from the artistic forms closest to their hearts.



EnTrustATL

Atlanta Symphony Orchestra is just one of the music-related beneficiaries of Franklin and Burke's legacy.

Building relationships

Henry Bowden

[Henry Bowden](#) believes the most important skill for an attorney is to listen for the goals and objectives of his clients. And he should know - he's helped individuals and families achieve their financial and philanthropic goals in Atlanta for over 45 years.

"As an attorney, I don't sell documents, wills and trusts," says Bowden. "I listen and provide advice about how you and your family can achieve your goals as related to your estate planning. Once I've given the advice, that might manifest in documents but those are just the product. The relationship is the important part and an advisor needs to listen for understanding."

Bowden has had a long relationship with the Community Foundation, which he values because of the deep expertise of our staff. But, as a third generation Atlantan, his fondest memory with the Community Foundation involves baseball. Years ago, a teacher at E. Rivers Elementary School called

him because they wanted to improve the ball field behind the school. Bowden suggested that the PTA set up a donor-advised fund. They raised the money and now Bowden has grandchildren that play on that field.



Our 2019 work strengthening the ATL



2020 Census - Ensuring an accurate count

Planning for the 2020 Census began in earnest during 2019. The Community Foundation focused our 2019 Civic Engagement Fund grantmaking on supporting “trusted voice” nonprofits that would strive to increase participation among hard-to-count communities who had low response rates in the 2010 Census including African American men, immigrants and low-income families, especially those with small children under 5.

To date the Foundation has funded census engagement efforts with 34 grant awards totaling \$705,000. Funding has been bolstered by an anonymous donor who has made multiple gifts totaling \$240,000 since 2018 for grants focused on the census, get-out-the-vote efforts and support for grass-roots social justice organizations. In all of its civic engagement and policy activity, the Community Foundation funds nonpolitical, nonpartisan activities.

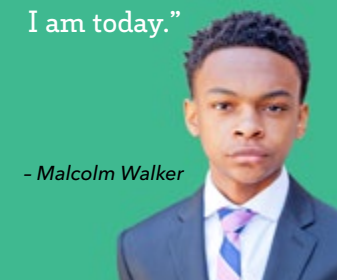


VOX amplifies teen voices

VOX ATL, also known as VOX Teen Communications, is Atlanta’s home for uncensored teen publishing and self-expression. Founded in 1993 by a group of 13 teenagers from all over the metro Atlanta area, VOX ATL gives teens a safe place to use their creative voices and learn leadership skills through journalism and self-expression.

One of those voices belongs to Malcolm “Mack” Walker, a recent graduate of North Atlanta High School, who has been involved with VOX since he was a freshman. Mack’s time not only gave him a chance to use his voice, it helped him grow as a person: “I felt like I had something to say, but because of my age, I did not have an ample platform to present myself on. VOX prepares students for the real world.” Now that Mack has graduated, he will be attending New York University in the fall to study film and television production. “The experience at VOX has meant everything to me. VOX became my home away from home,” he said.

“Never have I heard of teens having so much opportunity at this young of an age. That experience developed and turned me into the leader I am today.”



- Malcolm Walker

In 2019, the Community Foundation began working with VOX to help support metro Atlanta youth in creating insightful content and amplifying their experiences. With a grant of \$49,075, VOX produced inspiring content and events, such as the “VOX Investigates Equity in Education” publication and related videos.

[\[Check out VOX Investigates here.\]](#)

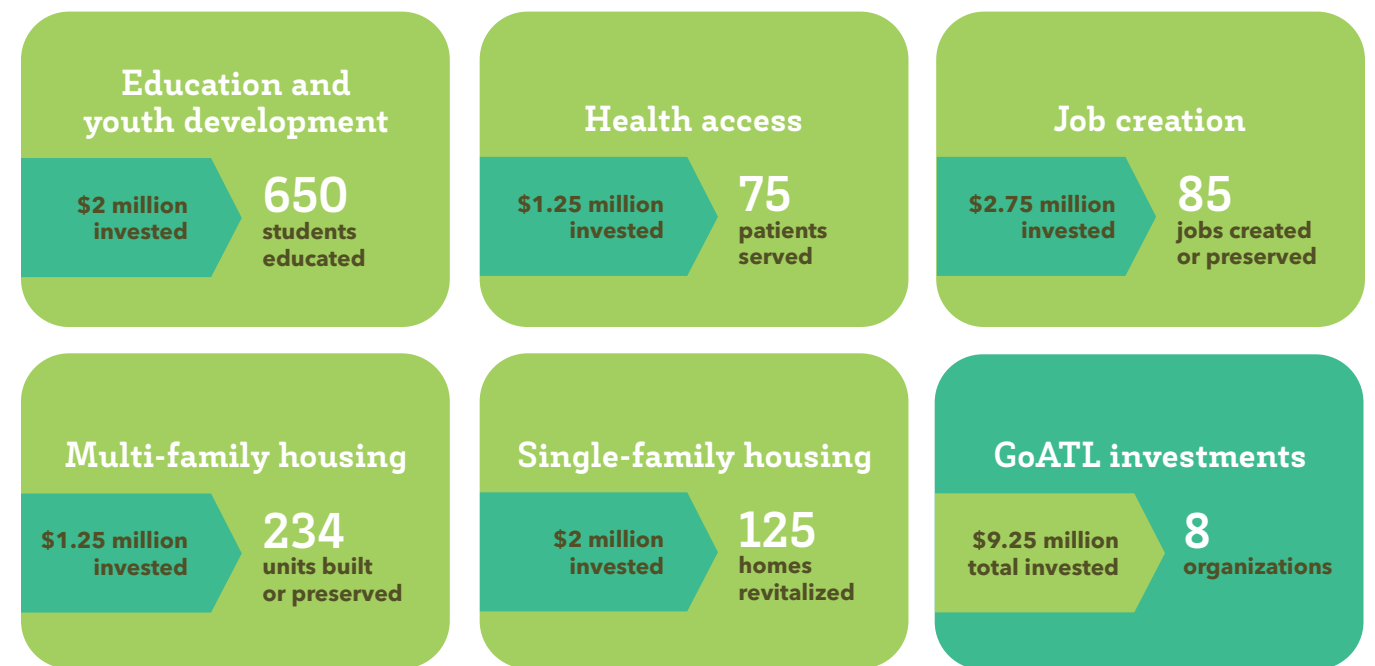


Angel is a first-time homebuyer and purchased an ANDP home in Decatur. [ANDP \(Atlanta Neighborhood Development Partnership\)](#) is just one of GoATL’s investments.

GoATL Fund drives targeted impact

Launched in 2018, the GoATL Fund provides flexible, cost-effective loans to organizations supporting investments into low-income individuals and families throughout metro Atlanta. As the region’s first diversi-




fied impact debt fund, GoATL provides a unique source of funding to amplify our grantmaking and strengthen affordable housing, education and entrepreneurship. [\[Learn more about the GoATL Fund here.\]](#)



ATLevate: Our focus on equity of opportunity

Metro Atlanta is a region rich with accomplishment and promise. Yet no matter how smart, how filled with the desire to succeed or how hard they work, most children born in Atlanta’s poorest neighborhoods will not advance beyond their current social and economic status, especially our Black and Brown neighbors. Equity of opportunity requires lasting change, not a quick fix, and requires partnership between us, our donors, civic leaders and other institutions. We devoted 2019 to learning about the ways to effect deep, lasting change - focus groups, conversations with national peers and immersive research. The result is our Equity of Opportunity Architecture, a roadmap for the path forward which will be implemented in 2020 and beyond. As we continue to learn from our community, we expect to make adjustments. The civil unrest of 2020 has given our focus on equity of opportunity renewed vigor. We know that Black lives matter and we commit to use our philanthropic capital and our capacity to collaborate throughout the region to end systemic racism and build an equitable community. [\[Learn more about ATLevate here.\]](#)

Equity of opportunity requires lasting change, not a quick fix, and requires partnership between us, our donors, civic leaders and other institutions.

Pillars	Pathways
Prosperous People 	Early childhood education K-12 education Post-secondary and alternative pathways to education and employment
Strong Families 	Physical, mental and behavioral health Active parenting and multigenerational relationships Quality youth development
Thriving Communities 	Affordable housing Community and civic engagement Environmental justice Transportation access

Pronounced A•T•L•ēvate

ATLevate



Community members make neighborhood THRIVE

THRIVE Thomasville Heights is a unique, resident-led advisory committee that has been tasked with directing micro-grants to community-led projects in the Thomasville Heights neighborhood in southeast Atlanta.

"To me, THRIVE is an avenue to help give our community a face lift as we include the input of community residents. Being a Council Member of THRIVE Thomasville and having direct insight of community needs allows me to be involved in the decision-making process," said Jeff Staniel, THRIVE council member.

In 2019, members attended monthly training sessions on grantmaking, communal healing, event creation, personal and community advocacy, power dynamics and much more. They approved grants for a variety of creative projects to strengthen the neighborhood, including community events and tax assistance for seniors.

Racial equity-centered consulting firm [Community-Build Ventures](#) partnered to design and facilitate the initiative.



THRIVE Thomasville Heights was born from a grant given by our [Spark Opportunity Giving Circle](#) to launch resident-driven grants in the Thomasville Heights community.

Catchafire

Nonprofits often operate on uneven playing fields, with varied access to capital, relationships, resources and professional development opportunities. For example, organizations in town or close to the I-285 perimeter often have an easier time recruiting board members or finding pro bono legal help, largely due to proximity. To level the playing field and aid nonprofits with the support they most need, the Community Foundation entered into the second year

of its partnership with [Catchafire](#) in 2019, granting more than 350 nonprofits access to 6,000 volunteer hours through the virtual skills-based app.

In 2019, organizations that the Foundation sponsored on Catchafire's platform received more than \$1.2 million in volunteer value through 311 consultations offering skills to our nonprofit organizations needing their know-how and expertise for projects like marketing plans, membership strategy and Salesforce training.



\$1,297,868 Saved



238 Projects matched



6,380 Volunteer hours

"Catchafire has been an incredible asset for us. In the nonprofit world, there are never enough hours in the day. Catchafire helps us be able to do more and do better."

- LaAmistad

For LaAmistad, five projects completed and \$19,850 saved in 2019!

2019 Highlights



Over 150 guests joined us for a panel discussion on June 13, during *Winners Giving Back: A Conversation with Anand Giridharadas* at the Greystone at Piedmont Park. [\[Watch some of the highlights.\]](#)

The Community Foundation is proud to support Rose Scott and WABE's "Closer Look" team as they travel to coffee shops in metro Atlanta for community conversations about the issues and topics affecting everyone's quality of life. [\[Learn more about these stories.\]](#)



At the launch for the [Harry Norman, REALTORS® Philanthropy Fund](#), we celebrated the firm's commitment to the Atlanta region's people and neighborhoods.



On May 28, Richard Rothstein, distinguished fellow of the Economic Policy Institute, Institute, joined us, Councilman Andre Dickens and others for a dynamic conversation on his 2017 book, [The Color of Law](#).

[\[Read more about the event.\]](#)

In partnership with Woodruff Arts Center, we hosted a dramatic reading of Ta-Nehisi Coates' award-winning book [Between the World and Me](#). The performance, first staged at the Apollo Theatre, was reimaged for Atlanta.



On, October 22, we welcomed *New York Times* bestselling author and Foundation friend Bruce Feiler to the Junior Achievement Discovery Center where he spoke about the power of legacy and telling your story. [\[Watch the recap now.\]](#)

2019 Financial Highlights

The Community Foundation is our region's steward of the long-term philanthropic assets that are entrusted to us for the future of greater Atlanta.

In 2019, our total assets were \$1.2 billion.

We distributed over \$133 million in grants and support in 2019. That represents 11,000 grants awarded to over 2,700 nonprofits locally, nationally and internationally. Of these grants, over 70% stayed within our 23-county metro Atlanta region.

Grants were made to 31 issue areas, the top three being Education, Arts/Culture/ Humanities and Human Services. Our organization distributed 11% of our total assets through grantmaking in 2019.

Our generous donors make our work possible. We received more than \$124 million in gifts in 2019 and established 43 new funds. Our most popular giving vehicle is the donor-advised fund.

In 2019, 86% of our total grants were made through donor-advised funds.

Benefitting from the strong equity market, our Investment Pool increased by 18.4% for the year. The Foundation's Investment Pool continues to post strong, positive three-, five- and 10-year returns: 9.5%, 7.3% and 8.2%, respectively. With capable oversight from our Board's experienced investment committee, we will continue to work on achieving the investment goals that are so critical for preserving long-term philanthropic capital for the region/community.

The financial information contained in this annual report is unaudited and summarized. Our 2019 audited financial statements and 990 will be posted in October 2020. Until then, our 2018 audited statements and 990 are available online.

\$124 million
in gifts

\$1.2 billion
in total assets

\$133 million
in grants and support

11,000
grants awarded

43 new funds
established

Over 70%
of grants stayed
in the ATL

STRENGTHENS THE REGION!

The work we do to strengthen the ATL is only possible through the generosity of you, our donors. Here are just a few examples of that work in 2019.

Each holiday season, Empty Stocking Fund (ESF) sets up "Santa's Village," where Atlanta families can shop for toys for their children. [\[Read more.\]](#)

Scottdale Early Learning provides early education to young children from low to moderate-income families in the Scottdale and Decatur area. [\[Read more.\]](#)

New American Pathways provides approximately 5,000 refugees per year with the tools to rebuild their lives and achieve long-term success. [\[Read more.\]](#)

Goshen Valley is committed to creating environments of safety, love and stability for youth in foster care. [\[Read Wade Hembree's story.\]](#)



Our Team

BOARD

Susan Grant, Chair

Frank Bell
 Rabbi Peter Berg
 Millard Choate
 Bert Clark
 Richard W. Courts, IV
 Patrice Greer
 Doug Hooker
 Julia Houston
 Wonya Lucas
 Jeffrey Muir
 Barbara Bing Pliner
 Bryan Rand
 John C. Reid,
Past Chair
 Dave Stockert
 Ramón Tomé
 Gregory Vaughn, MD
 Jerry Wilkinson
 Studie Young

Legal Counsel

Benjamin T. White,
 Alston + Bird

[\[Learn about our Board\]](#)

STAFF

Alicia Philipp, President & CEO

Erin Drury Boorn
Senior Philanthropic Officer
 Catrece Brown
Accountant
 Nikonie Brown
Marketing Administrative Assistant
 Diaka Burke
Marketing and Events Associate
 Janice Burton
Grants Payable Associate
 Mary Cernilli
Director, Investments
 Jill Clark
Philanthropic Associate
 Alyssa Cobbs
Program Officer, Strong Families
 Mark Crosswell
Managing Director, Social Impact Strategy
 Diana Champ Davis
Vice President, Capacity and Chief Financial Officer
 Chris de Lastic
Director, Finance and Accounting

Katrina DeBerry
Program Officer, Thriving Communities
 Muhammed Drammeh
Senior Accountant
 Erin Dreiling
Marketing and Communications Manager
 Sybil Elie
Philanthropy Administrative Assistant
 Jarrod Fleming
Philanthropic Associate
 Juanita Gaynor
Accounts Payable Clerk
 Evan Greene
Donor Data and Portal Manager
 Elyse Hammett
Vice President, Marketing and Communications
 Mitch Hollberg
Database and Analytics Manager
 Mindy Kao
Program Associate, Equity
 Hannah Klemm
Program Assistant
 Barrett Coker Krise
Senior Philanthropic Officer
 Terry Mazany
Senior Vice President, Philanthropy
 Errika Moore
Senior Program Officer, Prosperous People

Jonny Newburgh
Impact Investment Associate
 Alison O'Carroll
Director and Philanthropic Counsel
 Lita Pardi
Vice President, Community
 Robin Rhodes
Director, Human Resources
 Clare Richie
Public Policy Specialist
 Ryan Rodriguez
Grants Manager
 Crystal Siclait
Receptionist
 Cedric Smith
Accountant
 Ikepo Talabi
Accounting Manager
 Anna Theodore
Program Associate, Thriving Communities
 Lauren Thomas
Program Associate
 Kathleen Wagner
Senior Philanthropic Officer
 Wanda Wallace
Database and Prospect Research Manager
 Phoenicia Warren
Office Manager/HR Associate
 Andrea Williams
Executive Assistant to President
 Sidney Wise
Philanthropic Associate

The heart of our organization is our people - the staff team (our "crew") that drive the work and the volunteers that help to govern and steward us.



Alicia Philipp officially announced her retirement at the 2019 Atlanta Regional Commission State of the Region breakfast. [\[See for yourself here.\]](#)

Fund Listing

82 Westminster Fund
1128 Life Insurance Fund
1972 Munich Olympic Massacre
Remembrance Fund
2327 Fund
2752 Fund

A

Hank Aaron Scholarship Fund
R. L. Abernathy Family Fund
Robert and Laura Abernathy Fund
Abramson Family Fund
Abreu Fund
Achieve Atlanta Scholarship Fund
Anita and Tom Adams Family Fund
Dorothy Adams Fund of the Clayton Fund
Madeline R. and Howell E. Adams, Jr.
Donor Advised Fund
Rob and Christel Adams Foundation Fund
Rob R and Christel Adams Veterinary
Technology Scholarship Fund
AFP-Carlos Fund
LuRae Ahrendt Foundation Fund
Lucy Rucker Aiken Fund
James Alexander Fund
James F. Alexander Memorial Fund
Betsy Van Vleck Aliffi Family Fund
Elkin Goddard Alston Fund for Fort Federica
Elkin Goddard Alston Fund for The Study Hall
ALTAFRA Fund
Alternate Roots Fund
Daniel P. Amos Family Foundation Fund
Anderson School Fund
Mary Alice and Albert Anderson Fund
Paul & Marian Anderson Fund

APAL Endowment Fund
A Place to Perform Fund
David Apple Life Insurance Fund
David Apple Pass Thru Fund
Catherine R. Arnold Fund
Arpin Charitable Gift Fund
Tom & Spring Asher Fund
Atlanta AIDS Partnership Fund
Atlanta Boys Club Fund
Atlanta Children's Shelter Fund
Atlanta Community Shop Fund
Atlanta Gay Men's Chorus Endowment Fund
Atlanta Public Schools International Exchange Fund
Atlanta Women's Foundation Fund
Atlanta Workforce Development Fund
Audience Building Roundtable Fund
Ron Autry Fund
AWBI 2018 Fund

B

Charles and Virginia Bagley Humane Fund
Bagley/McCollough Charitable Fund
Bahl Family Fund
Bailey Foundation Fund
E. David and Linda C. Ballard Family Foundation
Scholarship Fund
Helen Ballard Family Fund
W. Perry Ballard Jr. Family Fund
Balloun Fund
Bankes Family Fund
Bankhead Fund
Lisa and Joe Bankoff Family Fund
Brian and Susan Banner Family Fund
Baranco Family Fund
Patricia Thrower Barmeyer Family Fund

Barnabas & Magdalene Fund
Barrow Family Fund
Virginia and Tom Barrow Fund
L. W. Barton Foundation Fund
Basecamp Fund
Bat-Ami Family Fund
Alice Ann and Pat Battle Family Fund
Daniel H. Bauer Family Fund
Bausch Family Fund for Christ
Bay Foundation Fund
Hilary and Luke Bayer Fund
Beach House Fund
Beauregard-Vellek Fund
Jeannie and Matt Beckett Family Fund
Amy & Frank Bell Family Fund
The Beloved Fund
Paul and Jennifer Bennecke Family Fund
Marty and Robyn Berger Family Fund
Berman Capital Advisors Charitable Fund
Berman Greater Good Award Endowment Fund
Mara and Justin Berman Family Fund
Ken Bernhardt AMA Atlanta Outstanding
Collegiate Marketer Scholarship Fund
Kenneth Bernhardt Family Fund
Dr. & Mrs. Maxwell Berry Fund
Warren Berry Mission Fund
Mary B. Bickers Family Fund
Biggins Family Fund
Biggs Family Fund
Bishop Family Fund
Family of Jane Carter Bishop Fund
Tully Blalock Fund
Gene & Barbara Blankenship Fund
Simon & Eleanor Bloom Donor Advised Fund
Boas Family Fund
Philip and Vicki Bolton Fund
Bondurant-Fahey Fund
Borra-Purdy Family Fund
Bourree Fund
Susan M. Boyd Fund

Boys & Girls Club General Endowment Fund
Boys Club SE Fund
Boys High School Fund
Boys High School Scholarship Fund
Frances Hollis Brain Foundation Fund
Chad and Hayley Brammer Family Fund
Breakstone Family Fund
Eleanor A. and Bernard H. Breedlove Fund
Benita Brewster Fund
Brighton Partners Fund
Brightstar Educational Foundation Scholarship Fund
Brightstar Fund
Bronfman Walker Charitable Fund
A. Worley & Mary Lou Brown Fund
The Janine Brown and Alex Simmons Family Fund
Matt and Carol Brown Fund
Nyda Williams Brown MD Fund
Raymond & Doris Brown Legacy Giving Fund
Sandra D. Brown Fund
Bruce Family Fund
Brumley-GRAD Scholarship Fund
Burge Plantation Fund of the Newton Fund
Fred and Sara Jean Burke Family Foundation Fund
Burnette Family Fund
Burns Family Fund
Lester W. Butts Scholarship Fund
Byerly Family Fund

C

Calhoun Family Fund
Callahan Family Fund
Camilla Schools Fund
Canine Assistants Endowment Fund
Kay W. Cantrell Family Fund
Canty Family Fund
Connor Caracappa Fund
Carefree Fund
Kathleen Carlin Fund for Men Stopping Violence
Thalia and Michael C. Carlos Advised Fund
Carnes Family Tulane Scholarship Fund

Carroll Family Fund
Ben Carter Family Fund
Frank Carter III Donation Fund
Wilson M. Carter Family Fund
Rayna Casey Fund
Louise Manget Cate Memorial Fund
Mark and Nancy Cavallo Charitable Fund
Cavill Family Trust Fund
CCHR Glenn Fund
Center for Positive Aging Fund
Centers of Hope Atlanta Initiative Fund
James Cox Chambers Fund
Wicke and Rufus Chambers Fund
Chandler Family Fund
Bev and Don Chapman Fund
Don Chapman Life Insurance Fund
Thomas F. Chapman Family Fund
Amey Chappell Fund
Tio Charlie Fund
Charlton Family Fund for Christ
Chary Family Donor Advised Fund
Chestnut Family Fund
Sam Chiarella Fund
Child Development Center at Central Fund
Choate Family Fund
Ciprari Foundation Fund
Cathy and Bert Clark Fund
Clayton Fund - Endowment
Clendenin Family Fund
Walter Clifton Family Fund
Martha J. Clinkscales & S. Elizabeth Fairleigh Fund
Kriss and Lisa Cloninger Fund
CNP Fund
Cobb Family Charitable Fund
Cochran Family Fund
Charles Edward Coe Foundation Fund
Dorothy and Sheldon Cohen Family Fund
Herbert Cohen Fund
Steven Cohen Family Fund

Edna W. Coker Fund
Robyn and David A. Cole Family Fund
Christine Coleman Fund
Coleman Family Fund
Ruth S. Coleman Charitable Fund
Coles-Novak Family Foundation Fund
Collins Fund
Beatrice A. Collins Fund
Conardt Fund
Conlee Fund
Conrads Family Foundation Fund
Conrads-Pendergast Family Fund
Contemporary Endowment Fund
Cool Girls Scholarship Fund
Courts and Becky Cooledge Family Fund
Copen Creative and Caring Fund
James T. Coppage Fund
Corbin Cares Fund
Cotton Patch Fund
Couchman & Noble Family Fund
Courts Foundation Fund
Clay and Missy Courts Family Foundation Fund
Lane and Richard Courts Family Fund
Malon and Sarah Courts Fund
T. Brad Courts Fund
Cade Cowan Giving Fund
Joel & Geraldine Cowan Fund
James E. Cox Children's Healthcare Fund
James E. Cox Medical Scholarship Fund
Cramer Fund
Helen & Vernon Crawford Scholarship Fund
James A. Cress Memorial Fund
Croft Family Fund # 3
Tim and Diane Crow Family Fund
B. C. Crowell Scholarship Fund of the Newton Fund
Culture Connect Legacy Fund
Jean and Carl Cummings Charitable Fund
Robert L. Cunningham Family Fund
Bradley N. Currey Jr. Fund

D
Hal and Becky Dally Family Fund
Hal and Becky Dally Scholarship Fund
of the Newton Fund
Albert and Ethelyn Daniel Family Fund
Andrew M. Davey Fund
C. L. Davidson Family Fund
Mary and Phil Davis Fund
Davison Fund
Darrell J. Dawson Family Fund
Dr. and Mrs. Harry E. Dawson Family Fund
Frank Dean Family Fund
James and Virginia Dean Family Fund
Steve Dearduff Scholarship Fund
Deeley-Easterly Fund
Olga C. deGoizueta Endowed Fund
for the Monastery of the Holy Spirit
Deguire Family Fund
Wendy and Gilbert Deitch Family Fund
Robert F. Dennis Fund
Martha Dinos Fund
Sam and John Dinos Family Fund
Dixon Fund
Mary Courts Wayne Dixon Fund
Dobbs Fund
R. Howard Dobbs, Jr. Foundation Fund
Maggie A. Dobbs Fund
Charles and Marjorie Dobrovolny Fund
Dobbie Dobson Fund
Dolly C. and Fanny D. Charitable Fund
Donkey Fund
Donkey Scholarship Fund
John and Marcia Donnell Fund
Richard B. Donner Fund
Donor Advised Fund #3
Donor Advised Fund #3 Unrestricted Portion
Kay and Jim Douglass Family Fund
Dragon Con Fund
Constance & Jesse Draper Fund

Jesse H. Draper Fund
Dreams Squared Scholarship Fund
Elinor LaFevre DuBois Fund
Allison & Billy Dukes Family Fund
Elisabeth Durbetaki Donor Advised Fund
Pandeli Durbetaki Donor Advised Fund
Dyer Family Fund
Elaine Courts Dyer Fund

E
EAS Fund
Mike and Anne Easterly Legacy Fund
Eden Fund
Edgerton Family Charitable Fund
John Thomas Edmunds Family Fund
Education Philanthropic Collaborative Fund
Edwards Charitable Fund
Edwards Family Fund
Eidson Family Fund
EKR Fund
ELG Donor Advised Fund
Charlie Elliott Wildlife Education Fund
of the Newton Fund
Ellis Family Fund
Ellis Fund
Clarence E. Elsas Memorial Fund
Emmaus House Fund
Emory University Alzheimer's Disease
Research Center Fund
Employee Legacy Fund
Engel Foundation Fund
Erbesfield Family Fund
Pat and Connie Esser Family Fund
Evans Family Fund
Everett Williams Scholarship Fund
Every Student Every Community Fund
Extra Mile Fund
Exum Family Fund



F

Fahs Family Fund
 Virginia Dixon Fasy Fund
 Bruce and Bea Feiman Fund
 Rebecca & Richard Felker Fund
 Fellman Encouragement Fund
 Fenton-May Family Fund
 Greg & Mary Ferguson Family Fund
 Michelle Ferguson-Priestly Fund
 Fernbank Endowment Fund
 Durward & Mary Fornara Fincher Fund
 Fine Fund
 Barbara McMillian Fisk Fund
 Fledglings Fund
 Fleury Family Fund
 Firstminster Fund
 Fornof Family Fund
 Forsyth County Medical Fund
 Forte Fund
 Marie and Brad Foster Family Fund
 Rob Fowler Fund of the Newton Fund
 Barney M. Franklin & Hugh M. Burke Charitable Fund
 R.M. Franke Family Fund
 Shirley Franklin Legacy Fund
 Stephen G. Franks Family Fund
 Freishtat Fund
 Friday Fund
 Jody and Popper Friedman (JPF)
 Family Foundation Fund
 Sam and Susan Friedman Family Fund
 Henry Frysh Charitable Fund
 Fulton Development Fund
 Funk Family Fund
 J. Rex Fuqua Family Fund

G

G & B Fund
 GA Council on Economic Education Fund
 GADA Services Fund

Gallatin Fund
 Martin T. Gatins Fund
 Gatley Family Fund
 Gausemel-Payne Cancer Fund
 Gay and Lesbian Atlanta Fund
 Ken F. Gearon Fund
 Roger and Corky Gelder Fund
 Gellerstedt Family Fund
 Gellerstedt Fund
 Genesis Shelter Fund
 Elizabeth Adeline Gentile Fund
 Georgia 3R's Project Fund
 Georgia Chamber of Commerce Foundation Fund
 Georgia Fellowship of Christian Athletes Fund
 Georgia Foundation for Public Education
 Georgia Gerontology Society Scholarship Fund
 Georgia Health Foundation Fund
 Georgia Power Foundation Fund
 Georgia Research Alliance Fund
 Georgia Securities Association Fund
 Getz Mitchell Family Foundation Fund
 GHJ Fund
 Gianturco Family Fund
 Jeff and Bonnie Giglio Fund
 Gippert Fund
 Giving Mutt Family Fund
 Glenn Millennium Fund
 Hilda D. Glenn Fund
 Jonathan and Suzanne Glenn Family Foundation Fund
 William Glenn Family Fund
 GNIK Fund
 John T. and Sara M. Godwin Fund
 Lieutenant Joel Hirsch Goldberg Scholarship Fund
 Abe & Phyllis Goldfarb Fund
 Tom Gonzalez and Florrie M. Funk Fund
 Goodendorf Family Fund
 Albert G. Goodgame Fund
 Lanier Goodman Fund
 The Anne and Dick Goodsell Fund

Goodwin Family Fund
 Gozansky Family Fund
 Grace North Atlanta Church Fund
 Grady Memorial Hospital Fund
 Margaret Graff and Richard Higgins Charitable Fund
 Susan Grant Charitable Fund
 Grants to Green Fund
 The Judy & Duncan Gray Fund
 Ronald G. Green Family Fund
 Greene Healthcare Fund
 James Greene Estate Fund
 Greer-Mayer Fund
 Robert C. Grepling Family Fund
 Grien Family Fund
 Annie and Paxton Griffin Fund
 James C. Griffin Fund
 Grimes Family Fund
 Gump Family Fund
 Louise Staton Gunn Fund
 Robert Hall Gunn, Jr. Fund
 G. V. W. Fund

H

Irma F. & Herbert J. Haas Fund
 Habitat for Humanity International Asset Fund
 Hagedorn Fund
 Cole Hagood Fund
 F. Sheffield Hale Family Fund
 Roger I. Hallock Fund #1
 Roger I. Hallock Fund #2
 Hammack/Adamson Fund
 Hamond-Hafitz Family Fund
 David & Kim Hanna Fund
 Sally and Frank Hanna Foundation Fund
 Hannah's Lunchbox Fund
 Hardin Fund
 Annie Lou Moore Hardy Fund
 John & Wilhelmina Harland Fund
 Harmon Family Charitable Fund

Harvard Business School Club of Atlanta Fund
 Hatfield Family Fund
 Eugene & Carol Hatfield Fund of the Clayton Fund
 Mary Wright Hawkins Endowment Fund
 Winsome Hawkins Neighborhood
 Leadership Institute Fund
 Ingram Hazell Family Legacy Fund
 William Heberton Fund
 Heekin Family Fund
 Alvin & Alice Hellmich Fund
 Henry Family Fund
 Carpenter and Henson Family Fund
 John M. Henson Fund
 Robert and Adeline Henson Fund
 Herman Family Fund
 Spencer Heyman Foundation Fund
 Hidden Haven Fund
 Jeff and Sivan Hines Family Fund
 Ida Hipp Fund
 Hoffman Family Fund
 Howard Hoffman Fund for Children
 Holyoke Fund
 Holzberg Family Fund
 Home Park Community Improvement Association Fund
 Home Run Fund
 David & Lynne Homrich Family Fund
 Honeywood Fund
 Hopkins Foundation Fund
 Matt and Anne Park Hopkins Family Charitable Fund
 Debbie Roos Hoppenfeld Fund
 Julia A. Houston Fund
 Mary Helen H. Howard Fund
 Don and Vickie Howe Fund
 Arthur and Jenny Howell Fund
 Bernard and Anne Howell Gray Advised Fund
 Evan P. Howell Fund
 Angie and William Hoyt Fund
 Walter and Alice Hoyt Family Fund
 Walter and Judy Hoyt Family Fund



Henry Huie Memorial Fund of the Clayton Fund
G.W. Humphrey Fund
John and June Hunter Unrestricted Fund
Tad and Janin Hutcheson Family Fund

I
Imagine It! The Children's Museum of Atlanta
Endowment Fund
Inman Family Fund
Inner City Scholarship Fund
Interfaith Airport Chaplaincy Fund
Investment Resource Partners Fund
Theresa and Grady Ireland Fund
Irvin Family Fund
Irwin Family Fund
Sidney Isenberg Lecture Fund

J
J.B. Fund
Jackson Family Fund
Deborah J. Jackson Fund
Jacobson Family Fund
Mark A. Jardina Foundation Fund
JAZ Fund
JBW Fund
JDF Family Foundation Fund
Al & Bridget Jensen Fund
Jerome Trust
JJK Family Fund
JM Family Fund
JNW Foundation Fund
Jobe Family Charitable Fund
Johnson Fund
Johnson Legacy Fund
Ellen Hale Jones Family Fund
Paul R. Jones Family Fund
Raymond Allen Jones III Family Fund
JORD Fund

J. O. Y. Foundation Fund
Stephen P. Joyce Charitable Fund
Junior League of Atlanta Centennial Gift Fund
Junior League of Atlanta Empowerment Fund
Junior League of Atlanta Fund

K
Kaiser Permanente Temp Restricted
Kappa Boule Endowment Fund
Craig & Hope Kaufman Charitable Fund
Kay Family Foundation Fund
Michael and Ann Kay Innovation Fund
Kelin Fund
Kelly Family Fund
Kendall Family Fund
Kendall GRIL Scholarship Fund
Kendeda Fund - No. 2
Jim C. Kennedy Scholarship Fund
Kerney Family Endowment Fund
Kester Fund
Khanna & Meade Families Habitat for Humanity Fund
Khanna & Meade Families Indiana University
Kelley School of Business Fund
Khanna & Meade Families Open Hand Atlanta Fund
Khanna & Meade Families United Methodist
Children's Fund
Kibler Fund NU
Kibler Fund #2
Galen and Anna Kilburn Fund
Raymond B. King Family Fund
Kinship with All Beings Fund
William, Lillian & Michael Kinskey Memorial Fund
KMS Fund
Sunny Knoll Fund
Jeffrey and Carol Koplan Family Fund
Robin & Stacy Kottman Fund
Kresge Foundation Fund
Kulinski-Faga Fund

L
Lacy Family Foundation Fund
LaFave Jones Fund
Stephen M. LaMastra Family Fund
Lanier Foundation Fund
Thomas H. Lanier Family Foundation Fund
Tommy Lanier Memorial Fund
Lantz-Royall Fund
John Martin Law Fund
Learn4Life Fund
LEB Fund
Lucy R. and Gary Lee Jr. Family Foundation Fund
Lee-Ehni Family Charitable Fund
Legacy Fund
Ann Lehfeltdt Fund
Steven and Julie Leibel Family Fund
Mary Beth Lester Family Fund
Daniel & Karen Levison Family Fund
Daniel & Karen Levison Family Fund - 1
Barbara W. and Bertram L. Levy Fund
Lewis Family Fund
Celian and Norma Lewis Family Fund
Liberation Foundation Fund
Ruth & C. K. Liller Fund
Linder Family Fund
Steven D. Linowes Family Fund
Literacy for All Fund
LM Charitable Fund
Lokey Family Fund
Richard A. Long Fund
Lorde-Rustin Giving Circle Fund
Lori Fund
H.L. Lough Fund
Violet Loutzenhiser Fund
BR Love Family Fund
Joel & Irwin Lowenstein Fund
LQM Fund
William Lucas Memorial Fund
LuluMa Fund
Lyons Scholarship Fund

M
M. Andrews - McDavid Methodist Church Fund
M. Andrews - Peachtree Road Methodist Fund
M. Andrews - Rays Chapel Baptist Church Fund
Ellen Macht Family Foundation Fund
Stephen J. Macht Fund
Pete and Crissey Maclean Fund
Madden Family Fund
Mahan Family Charitable Fund
Blanchette Chappell Maier and Frank H. Maier, Jr. Fund
Malas Fund
Malas Real Estate Fund
Herring Malone Family Fund
Emily and Brendon Maloney Family Fund
Lewis and Faye Manderson Fund
Ma-Ran Foundation Donor Advised Fund
Mara Fund
Marani Family Fund
Bernie Marcus 90th Birthday Fund
David and Dorothy Markert Family Charitable Fund
Marsh Harbour Relief Fund
Martiniello Family Fund
D. Lurton Masee Community Welfare Fund
George W. and Karen Apple Mathews Fund
Joe and Carol Mathias Fund
Mauldin Hill Fund
Armand May Estate Fund
Mayo Family Charitable Fund
Mayor's Youth Scholarship Program
McCall Fund
McCamy Family Fund
Ann & John McCarty Fund
William W. McClure Fund
Betty and Conn McConnell Charitable Fund
McCrary - All Saints Episcopal Church Fund
McCrary - Auburn University Fund
McCrary - Egleston Children's Hospital Fund
McCrary - Florence Crittenton Home Fund
McCrary - GA Heart Association Fund
McCrary - Our Lady of Perpetual Help Fund

McCrimmon Family Fund
 Camille and Robert McDuffie Family Fund
 Elizabeth & Phillip C. McDuffie Fund
 John N. McEachern Fund
 McFarlane Fund
 McGeehan Family Fund
 McGrevin Family Fund
 McGuirk Family Fund
 McKenna-Daniel Family Fund
 John and Janine McKenney Family Fund
 McMillian Fund
 McNally Family Fund
 Ryan D. McNeil Family Foundation Fund
 McPhee Family Fund
 Eleanor Stout McRae Fund
 Charles H. and Margaret R. McTier Fund
 Means Family Fund
 Ernestine Adler Mendelssohn &
 David W. Mendelssohn Fund
 Mercer Family Fund
 Metropolitan Atlanta Arts Fund
 Metz Family Fund
 Middlebrooks Family Foundation Fund
 Miller Family Charitable Fund
 Miller Family Fund
 W. G. Miller Family Fund
 Milling Family Fund
 Cooper Mills Family Fund
 Isobel and James T. Mills, Jr. Family Fund
 Lorraine P. Mills Charitable Foundation Fund
 James and Betty Milner Fund
 Misner Family Fund
 Mitchell Family Fund
 Mock Family 5H Fund
 Peter Moister Donor Advised Fund
 Moldt Family Fund
 Melvin D. Mond Fund
 Monroe Family Fund
 Montag Family Fund

Moore Family Charitable Fund
 Maya Moore Life to the Full Foundation Fund
 Peggy B. and Dudley L. Moore, Jr. Family Fund
 Virginia Moore Fund
 Mopsy Fund
 Morehouse/Lackner Arts Fund
 Audrey Morgan Atlanta Ballet Endowment Fund
 Morgan County Academic Booster Club Fund
 of the Morgan Fund
 Morgan Family Fund
 Morgan Fund - Endowment
 Morgan/Sonnenfield Giving Fund
 Morgens West Fund
 Greg Morris Fund
 Michael P. Morris Family Fund
 Morris Family Charitable Fund
 Mosley Family Fund
 Moving In The Spirit Fund
 MPD Fund
 Mueller Family Foundation
 Muir Family Fund
 Richard S. and Winifred B. Myrick Fund

N

N Square J Square Fund
 Nadal Family Foundation Fund
 Robert L. and Susan L. Nardelli Family Fund
 Navy League Leadership Fund
 Michael R. Nawrosky Scholarship Fund
 Thornton Neal Fund
 Ellen and George Nemhauser Charitable Fund
 New American Pathways Endowment Fund
 Neal and Lisa Newsom Family Fund
 Neighborhood Endowment Fund
 Neighborhood Fund
 Newey Lawlor Fund
 Newton Fund - Endowment
 Albert Nixon Fund
 C. O. and Nell Nixon Fund

Nonprofit Effectiveness Fund
 Michelle H. Nordin Fund
 Bertil D. Nordin Fund
 Michelle Nunn Civic Leadership Fund
 Sally D. and McKee Nunnally Family Fund

O

O Fund for New Work
 OBG Fund
 O'Brien Fund
 M. Winnifred O'Dell Fund
 Oelkers Family Fund
 George A. and Carolyn C. Olive Fund
 Oliver Charitable Fund
 O'Neal Family Fund
 Open Hand Fund
 Franca G. Orefice Family Fund
 Orphan Family Fund
 Our House Endowment Fund
 Shirlitha Owens Pursuit of Excellence Fund

P

Packer Family Foundation Fund
 Palefsky Family Fund
 Clarence E. and Florrie E. Palmer Fund
 Gregg and Beth Paradies Family Fund
 Jill Paradies Fund
 Park Family Foundation Fund
 Sunny Park Insurance Fund
 Parker Benevolent Fund
 Parker Family Charitable Fund
 Parker Family Fund
 Richard and Karen Parker Family Charitable Fund
 Parker-Bear Fund
 James M. Parks Fund
 Karen Elaine Webster Parks Foundation Fund
 PATH Foundation Endowment Fund
 Solon and Marianna Patterson Fund
 Joseph M. Patti Family Charitable Fund

Pattillo Scholarship Fund
 Susi Van Vleck Patton Family Fund
 Pead Family Fund
 Nan and Brittain Pendergrast Fund
 Thomas E. Penland, Jr. Fund
 Pennera Charitable Fund
 Pentwater Fund
 Pentz Fund
 PEP Fund
 Perry Charitable Fund
 Catherine Perry Family Fund
 Petropoulos/Galvin Fund
 Arthur Pew, Jr. Fund
 Alicia Philipp Leadership Fund
 Pickron Family Fund
 Piedmont Park Conservancy Endowment Fund
 Pinetree Fund
 Pinkerton Family Fund
 Piper's Friends Fund
 Mary C. Placido Family Fund
 Major Stephen Wesley Pless Fund
 Pling Family Foundation Fund
 Mildred Plunkett Fund
 Poca Fund
 Pollack Family Fund
 Ponder Family Fund
 Knox Davis Porter Fund
 Powhatan Kelley Family Fund
 Barbara and Sam Preston Fund
 Barbara Johnson Prickett Family Fund
 Project Open Hand Endowment Fund
 Property Endowment Fund
 Public Policy Fund
 Pulgram Family Charitable Gift Fund
 PwC/Fran Weiss Scholarship Fund



Q

Quick Charitable Fund
David B. Quin Fund
Edwin L. Quin Fund
Langdon C. Quin III and Caren R. Canier Family Fund

R

R & B Fund
Raabe Family Fund
RACCGC Family Fund
Ravi & Sumathi Ramachandran Fund
Rand Family Foundation Fund
Larry and Kendra Rasche Foundation Fund
Rather Family Fund of the Morgan Fund
Ratner Family Charitable Fund
Katharine J. Rayner Fund
RCNF Crawford Fund
Margery and Dan Reason Family Fund
Mabel Reeder Donor Advised Fund
Glen & Edith Reed Family Fund
Joyce Reedy Life Insurance Fund
Reel People Care Fund
Reeves 4 Family Fund
Reid Family Trust Fund
Bobby Reid Family Fund
Reilly Family Fund
Wendell and Mary Reilly Fund
Residential Services Fund
A. Rhodes Fund
Richardson Family Fund
Jennifer Rigby and Walter Cronk Fund
RK & KS Fund
Roberson Music Fund
S. M. and E. B. Roberson Fund
M.C. Roberts Fund
Emily M. K. Robertson Fund
A. J. Robinson and Nicole Ellerine Family Fund
Olive and Roby Robinson Family Fund

R.B. Robinson Fund
Nancy and Dan Robitaille Family Fund
Rock Spring Presbyterian
Rockdale Fund
Rogers Family Fund
Ashley Rogers Fund to Benefit The Furniture Bank
Ashley & Bill Rogers Fund - to benefit Henry Rogers
Health Center Art Program at the Forest at Duke
Gary W. Rollins Foundation Donor Advised Fund
O. Wayne Rollins Donor Advised Fund
Rose Family Fund
Rosebud Fund
Michael and Donata Ross Fund
Roswell Rotary Foundation Fund
Lanella Rowan Fund
Rushing Family Fund
Russell Family Fund
H. Jerome Russell Jr. Fund

S

Saad Abubaker Fund
Henry Bradley Sacre Fund
SafePath Children's Advocacy Center Fund
Safigan Family Fund
St. Luke's TACC Endowment Fund
Samaritan Counseling Center of Atlanta Fund
Sanders Family Foundation Fund
Teddi Sanford Fund
Sartain Lanier Family Foundation Fund
David Satcher Fund
Saunders Fund
Schaper Family Donor Advised Fund
Kim Schaper Donor Advised Fund
Lauren Schaper Donor Advised Fund
Laurel Schmitt Memorial Fund
Schneider Family Fund
Charles and Enid Schneider Fund
Schroder Family Giving Fund

P.T. Schutze Endowment Fund
Sandy and Sue Schwartz Family Fund
Schwarzkopf Family Charitable Fund
SCIF Sea Turtle Intern Fund
Kathy and Red Scott Foundation Fund
Phil and Dee Scott Family Fund
Roger Winfield Scott Foundation Fund
of the Clayton Fund
Graham & Carol Selick Charitable Fund
Senior Citizens Ball Fund
George Sessions Life Insurance Fund
Seven Stages Capital Fund
William Shallenberger Trust Fund
for Midtown Assistance Center
William Shallenberger Trust Fund
for Samaritan Counseling Center of Atlanta
Shannon Family Foundation Fund
Shapiro Family Foundation Fund
Shapiro Family Fund
Sheaves Fund
Sheaves II Fund
Joe and Matilen Sheram Fund
Roy and Kimberly Sheram Fund
Madhuri and Jagdish Sheth Family Fund
Shiverick Family Fund
Henry and Constance Short Fund
Frances Candler Shumway Fund of the Morgan Fund
Beverly & Horace Sibley Family Fund
Ann Daughtery Sickeler Fund
Mary Ann G. Siegel Fund
Siegel-Templeton Fund
SuMac & Sons Fund
Vee Simmons Life Insurance Fund
Simpson Butts County Fund
Simpson Family Fund
Simpson Foundation Fund
Marc and Laurie Skalla Charitable Fund
Jeffrey P. Small Jr. and Alison N. Small Gift Fund
Adele M. Smith Fund

G. & H. Smith Fund
Glenn Smith Family Fund
Julia Thompson Smith Fund
Sara Horne Smith Fund
Sheryl Smith Fund for High Meadows School
Sidney M. Smith Fund
Virgil and Joann Smith Family Fund
Smithgall Arts Center Fund
Smithgall Family Fund
Smithgall/Arts Council Complex Endowment Fund
James M. and Virginia Smyth Scholarship Fund
Virginia Snoddy Fund
Virginia Snoddy Life Insurance Fund
Brian and Sherry Soucy Family Fund
Southern Ivy League Fund
Southwest Christian Hospice Endowment Fund
Spain Family Fund
Spanx by Sara Blakely Foundation Fund
Spark Fund
Special Fund No. 9
Special Fund No. 813
Special Fund #1101/1102
Special Fund No. 2004
Special Fund No. 3060
Special Collections Fund
Spruill-Williams Family Fund
S. Rhodes Fund
Stacy Family Fund
State Farm Education Assist Fund
Stecher Fund
Stempler Fund
Stockert/Ives Family Fund
Stribling Family Fund
George & Pearl Strickland Fund
Student Global Health Fund
Suddath Family Fund
Sundown Fund
Sutherland Women Stepping Up Fund
Tally and Dan E. Sweat, Jr. Fund



T

Talbot Fund
 Jim and Mary Tapp Family Fund
 Kenneth and Leila Taratus Fund
 Dennis and Betty Taylor Family Fund
 Lisa Cannon Taylor and Chuck Taylor Family Fund
 Margaretta J. Taylor Fund
 Mary Rose Taylor Fund
 TDBFF2 Fund
 Tech High Scholarship Fund
 THISISIT Fund
 Thompson Fund
 C. Q. Thompson Fund
 Allen Thornell HIV Care and Service Fund
 E. Thornton - All Saints Episcopal Fund
 E. Thornton - Egleston Hospital Fund
 Edna McCandless Thornton Scholarship Fund
 Eric Thornton Fund
 Jack and Kathleen Thornton Fund
 Thorpe Family Foundation
 Hellena & Isaiah Tidwell Family Fund
 Tollison Family Fund
 Carol and Ramon Tomé Family Fund
 Triangle Club Endowment Fund
 Truly Living Well Collegetown Farm Fund
 J. M. Tull Fund
 Claude Turner Endowment Fund
 L&J Turner Family Fund

U

Ursine L'Attitudes Fund
 USO Endowment Fund
 Uttenhove Family Fund

V

Valentine Family Fund
 Lucy & Bill Vance Fund
 Rao and Rani Varanasi Fund

Jason A. Varitek Family Fund
 Chilton & Morgan Varner Fund
 Wayne and Lee Harper Vason Fund
 of the Morgan Fund
 Ventulett Family Fund
 Verrill Family Fund
 Hubert and Emily Visscher Fund
 Marilyn & Bill Voss Fund

W

Dawn Walker Fund
 Lee Walker Fund
 Elizabeth Slaton Wallace Fund
 Casseta P. Walters Memorial Fund
 Raymond and Doris Warren Foundation Fund
 Thomas K. Weber Family Fund
 Welcoming Atlanta Fund
 Robert and Laura Wellon Family Fund
 Wells Drive Fund
 Wells Fargo Bank Fund
 Anne Glenn Weltner Fund
 D. Scott Westmoreland Family Fund
 Harry and Virginia Whisenant Donor Advised Fund
 Jane and Ed White Fund
 Ramona and Ben White Family Fund
 Whitehead Children's Christmas Fund
 Joseph B Whitehead Foundation Fund
 Whitmire Family Fund
 Wilkinson Family Fund
 Stephen and Robin Wilks Family Fund
 Williams Family Fund
 Carolyn Williams Memorial Scholarship Fund
 of the Newton Fund
 Jesse Parker Williams Foundation Fund
 Eldon Wayne Williamson Designated Fund
 Eldon Wayne Williamson Scholarship Fund
 Willet Fund
 Julia & Lawrence Willet Fund

M & G Wilson Fund
 Clayton B. Wimberly Family Fund
 Winn Fund
 Joni Winston Fund
 Winston Family Fund
 WISH Foundation Fund
 Brad Wolff Family Foundation Fund
 Women's Chamber of Commerce Scholarship Fund
 Libby and Jenner Wood Donor Advised Fund
 Woodlands Garden Endowment Fund
 Woodroof-Funderburke Fund
 K. Brent and Lynn C. Woodruff Fund
 Albert and Michele Woodroof Fund
 Bright & Robert Wright Fund

Y

Jay and Marshalla Yadav Family Fund
 Yellowlees Family Fund
 You Are Loved Fund
 Young Family Fund
 Townshend Young Fund
 Zachry and Hilary Young Family Fund

Z

Rev. A. T. Zellars Endowment Fund
 Zera Allen Fund

981 funds
 active in 2019

43 new funds
 established in 2019

Thank you!

Making
 ATTITUDE STRONG

Join us in the ATLevate journey!



191 Peachtree Street NE, Suite 1000, Atlanta, GA 30303
cfgreateratlanta.org